

# Ryan White Program Demographic Data Year 21

(3/1/2011 thru 2/29/2012)

aidsnet.org

(5/3/2012)

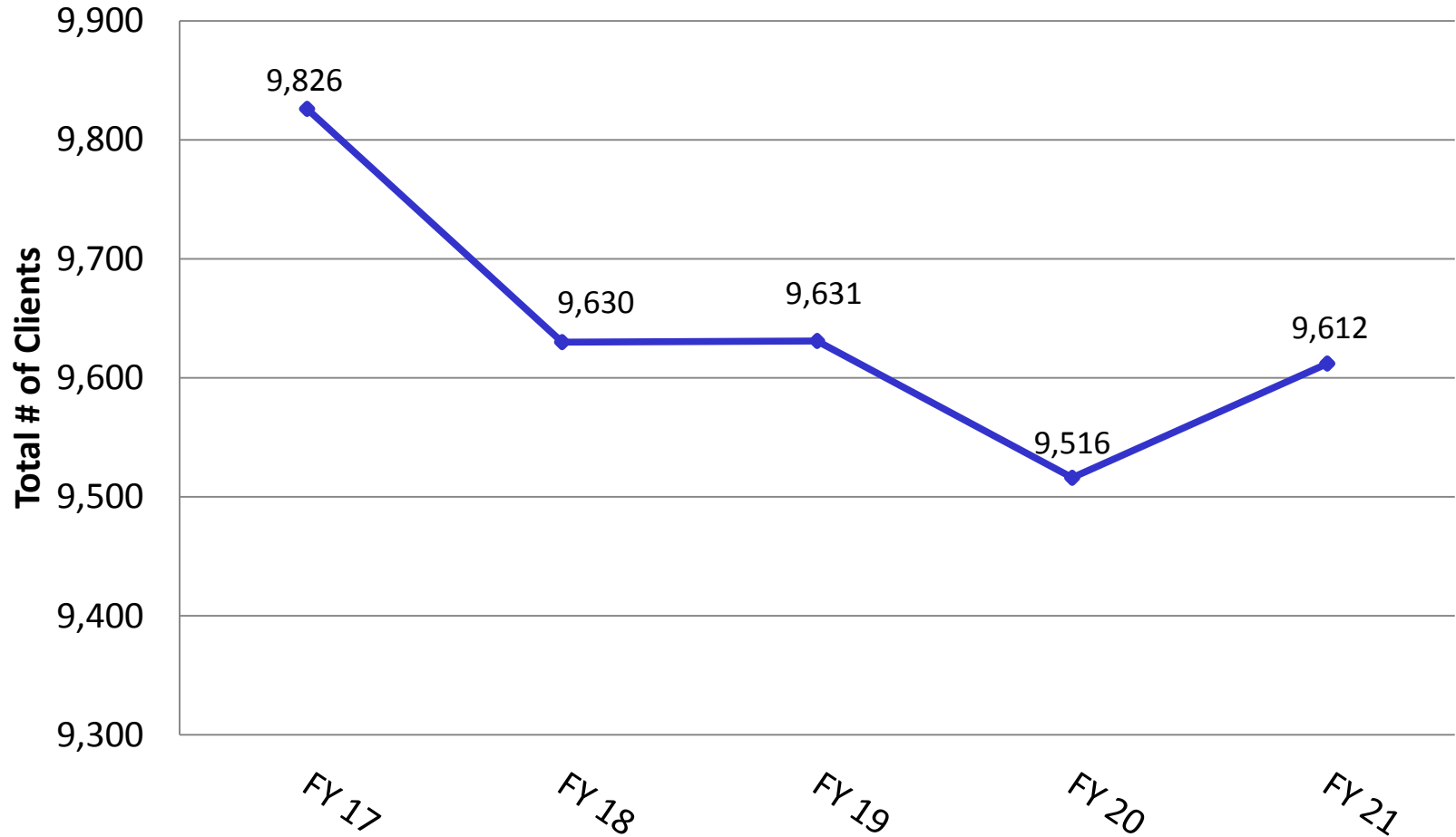
**Review of Utilization Data from the  
Service Delivery Information System (SDIS)**

**Prepared by Behavioral Science Research Corporation**



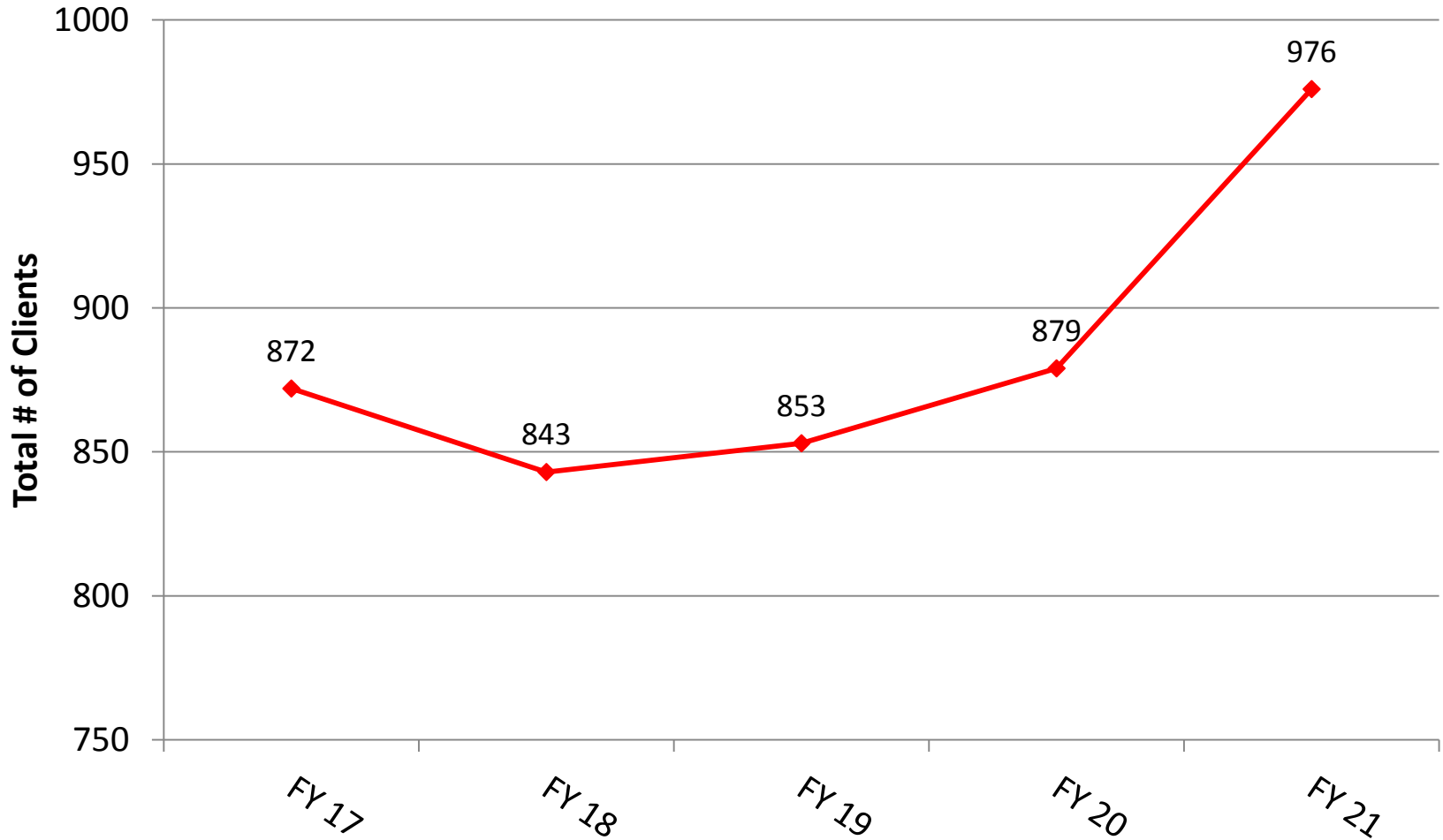
# Total Number of Clients Served PLWHA In Care, Ryan White Program FY 17 thru FY 21

aidsnet.org



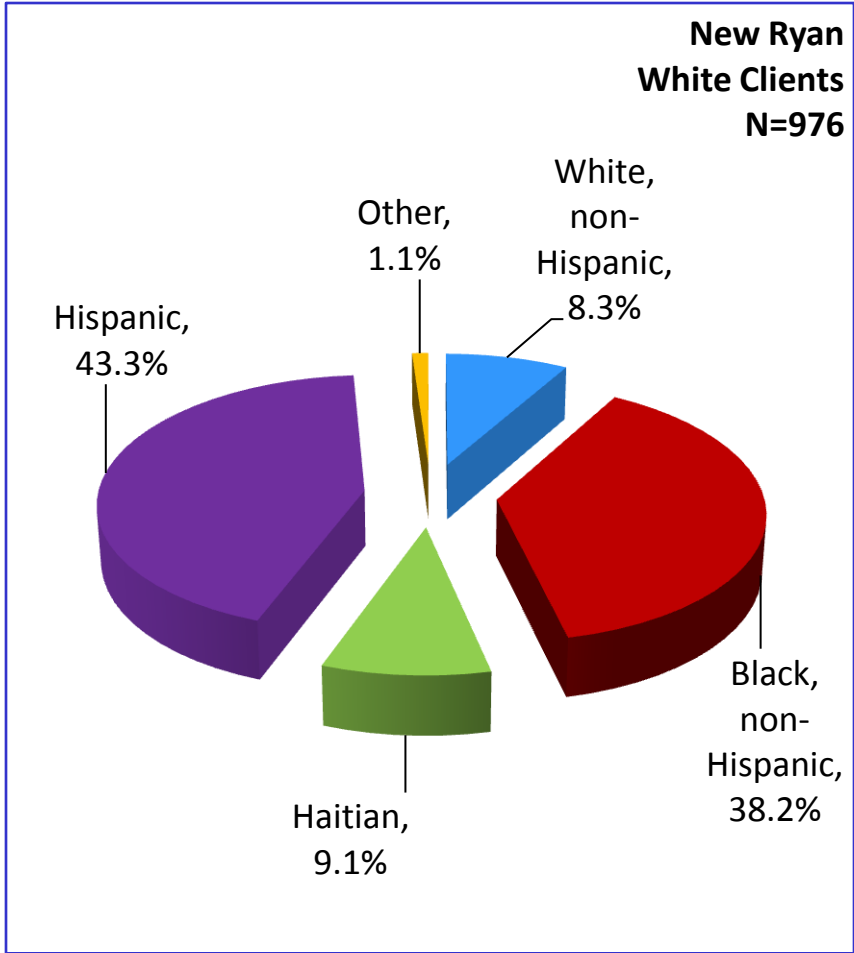
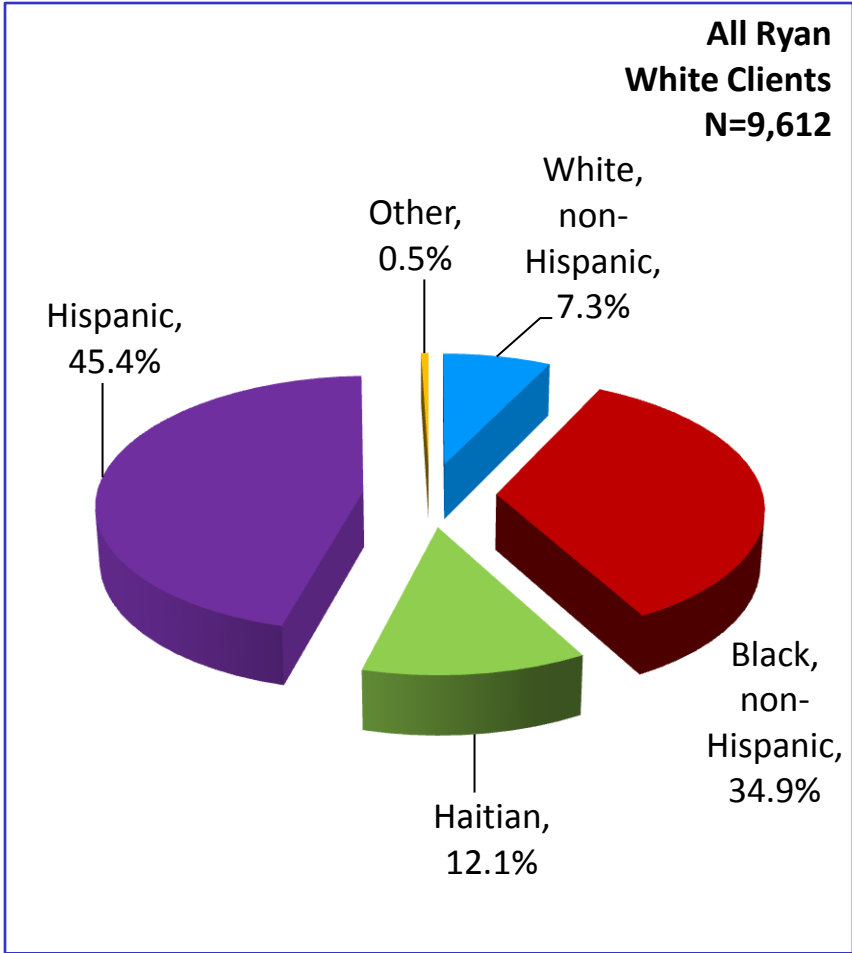
# Number of New Clients Served PLWHA In Care, Ryan White Program FY 17 thru FY 21

aidsnet.org



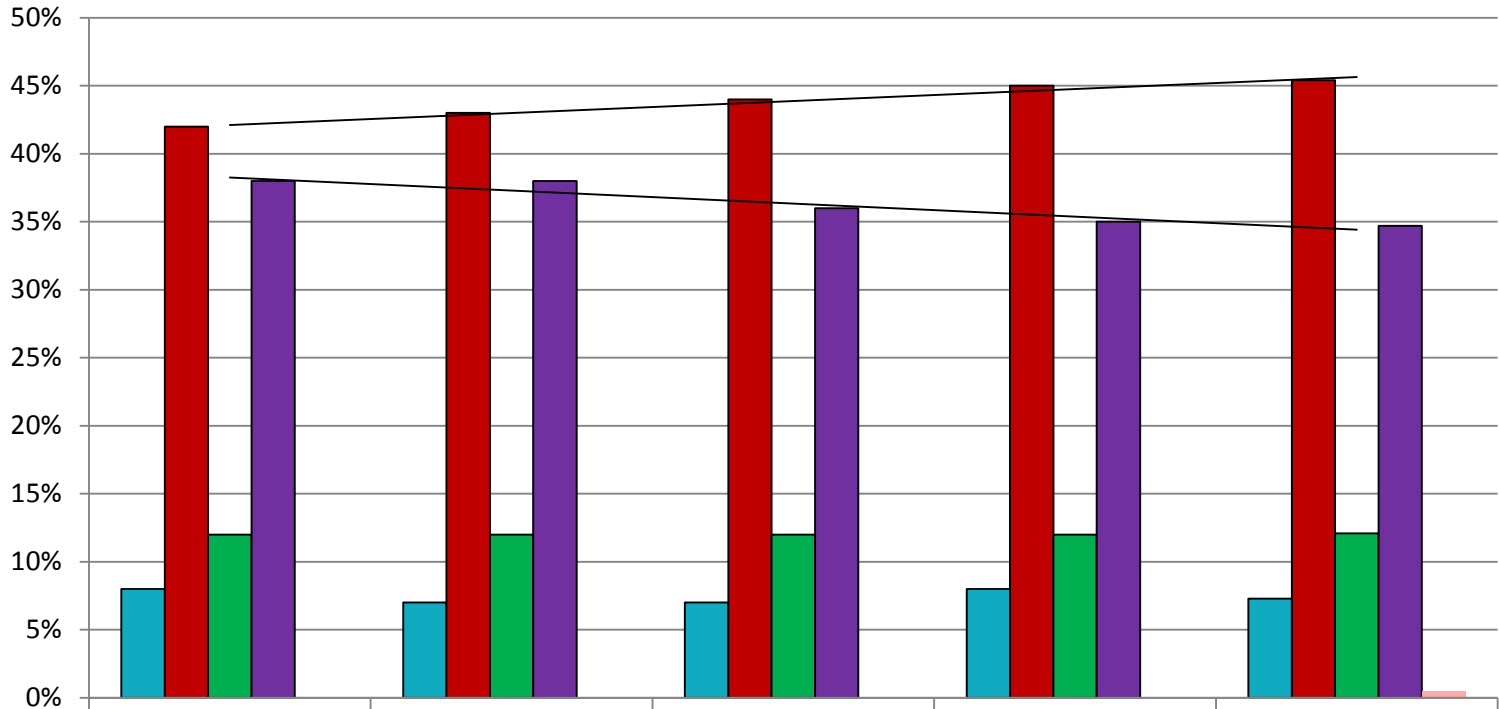
# Race/Ethnicity PLWHA In Care, Ryan White Program FY 21

aidsnet.org



# Race/Ethnicity PLWHA In Care, Ryan White Program FY 17 thru FY 21

aidsnet.org



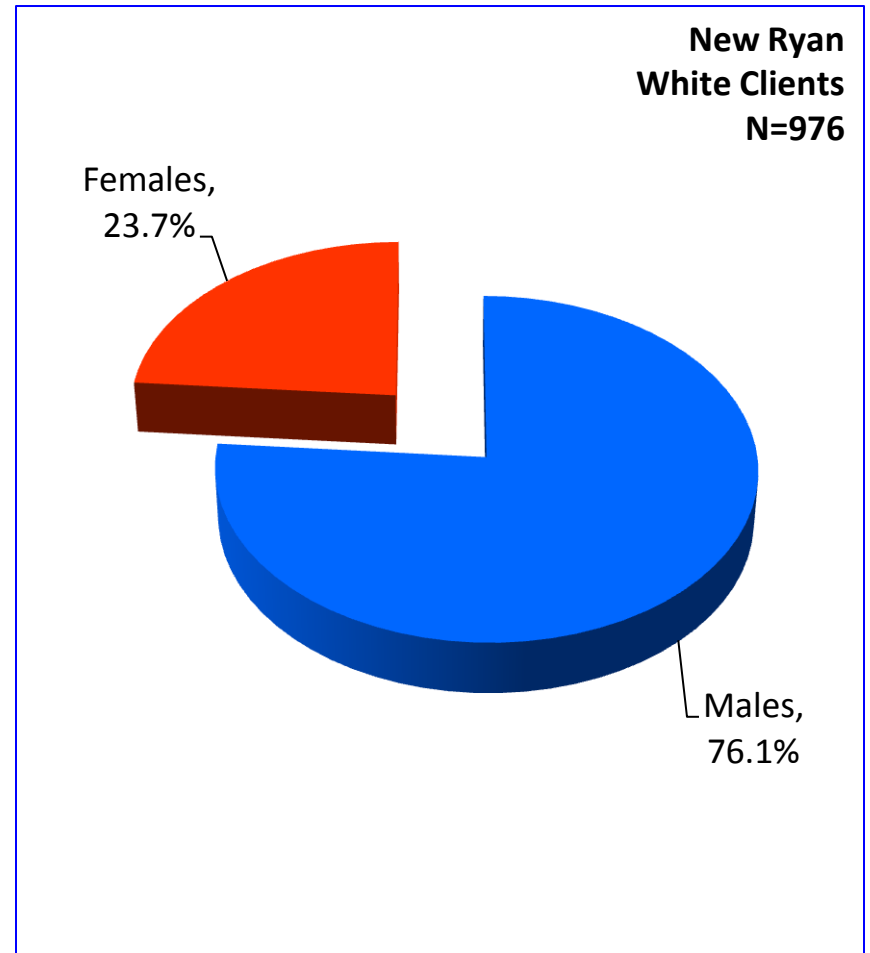
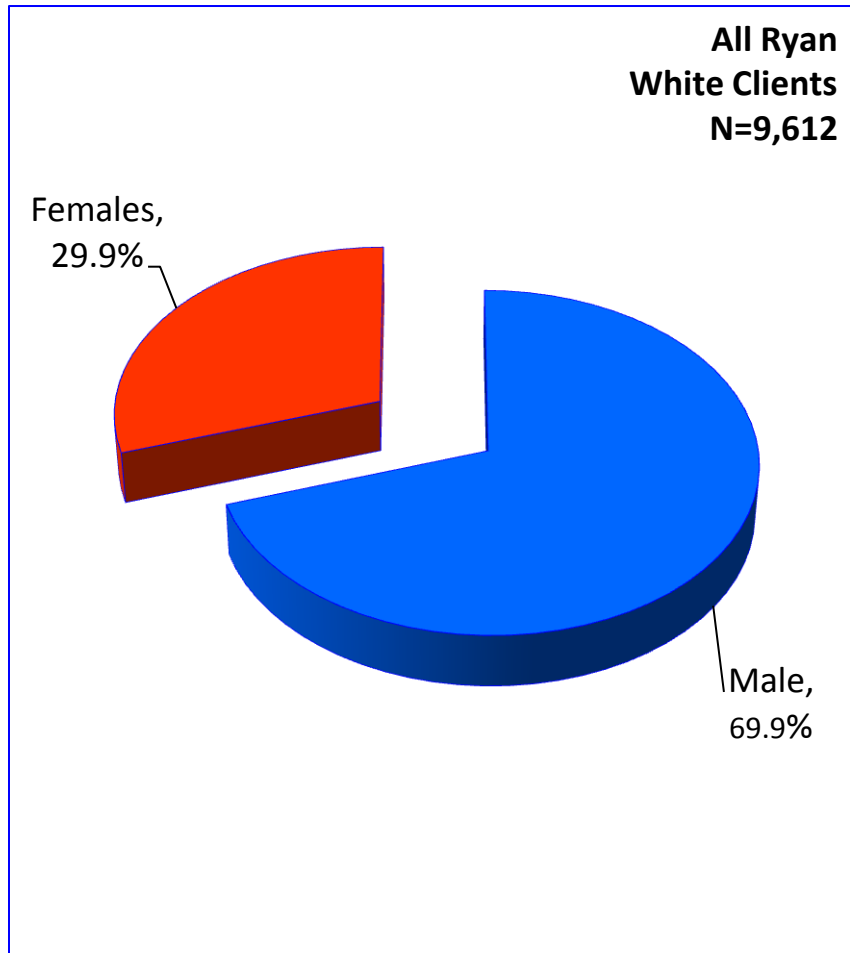
	FY 17	FY 18	FY 19	FY 20	FY 21
White, non-Hispanic	8%	7%	7%	8%	7%
Hispanic	42%	43%	44%	45%	45%
Haitian	12%	12%	12%	12%	12%
Black, non-Hispanic	38%	38%	36%	35%	35%
Other	0%	0%	0%	0%	1%

# Gender

## PLWHA In Care, Ryan White Program

### FY 21

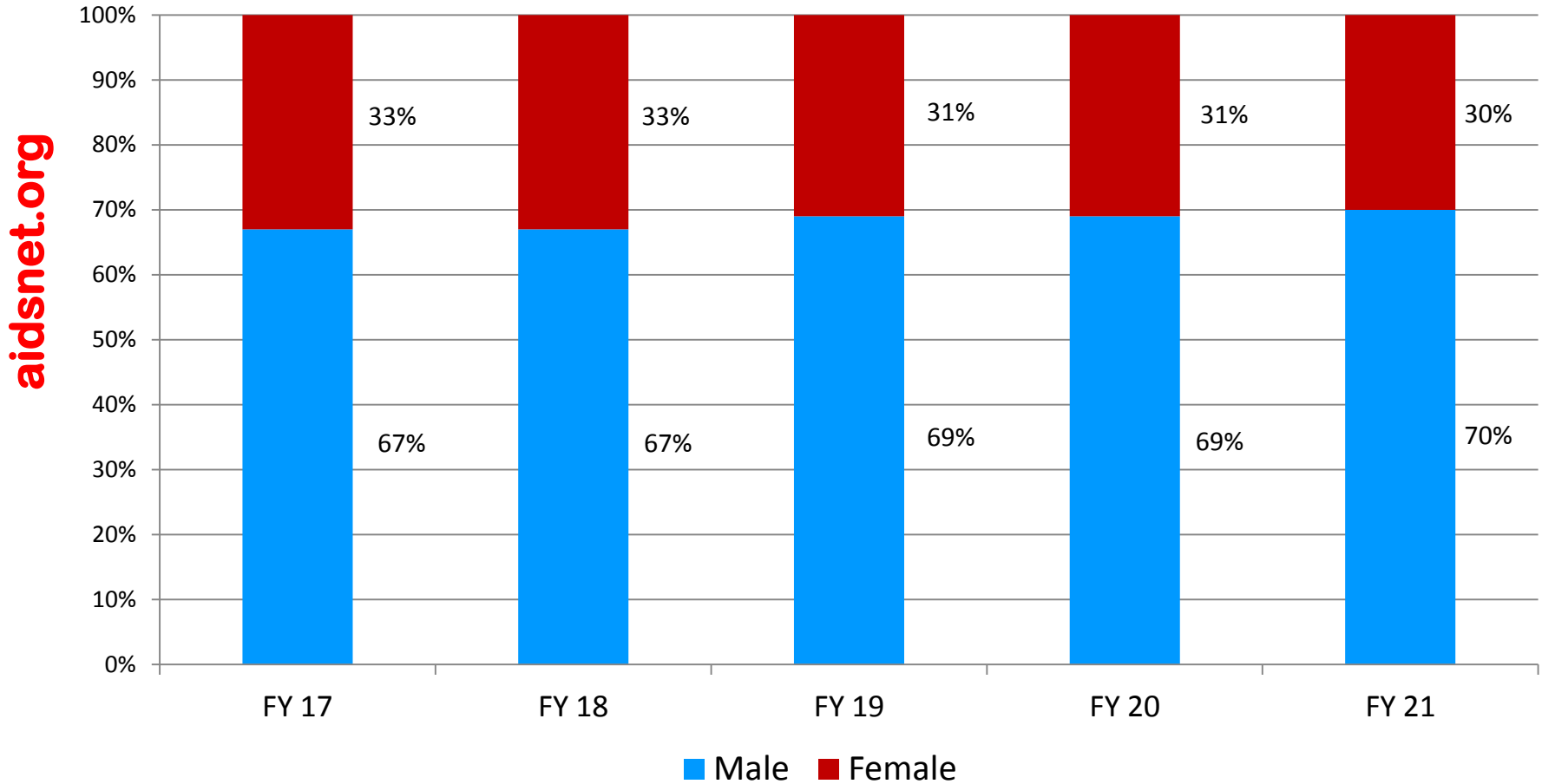
aidsnet.org



# Gender

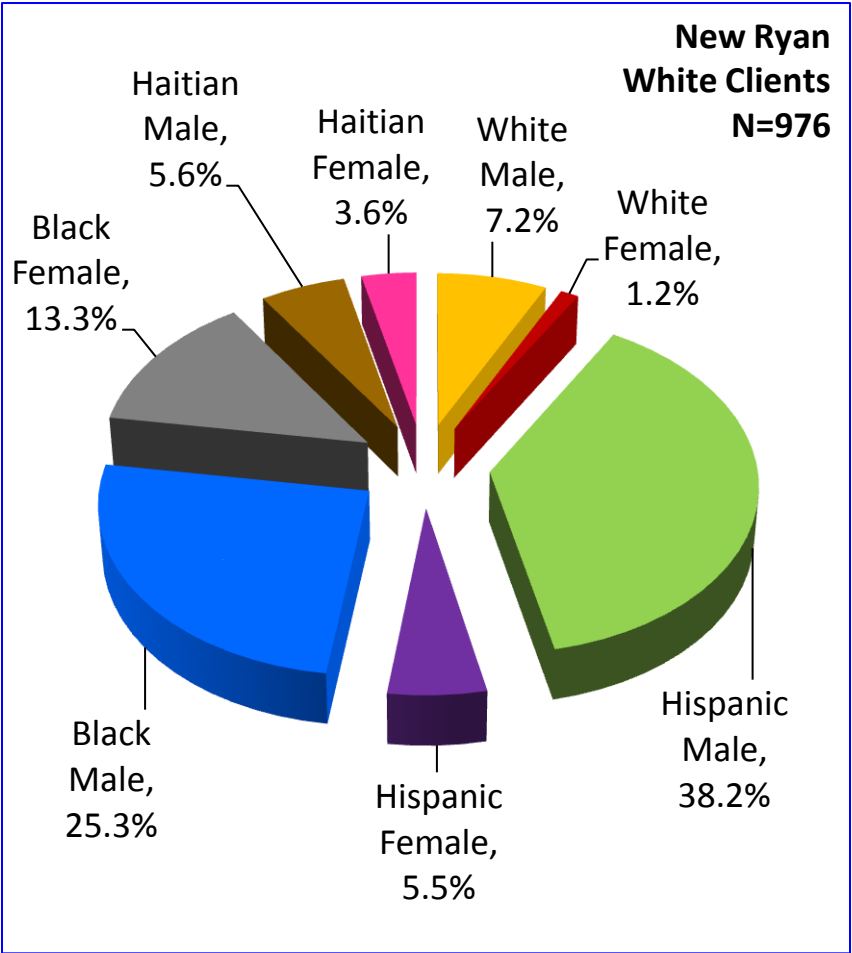
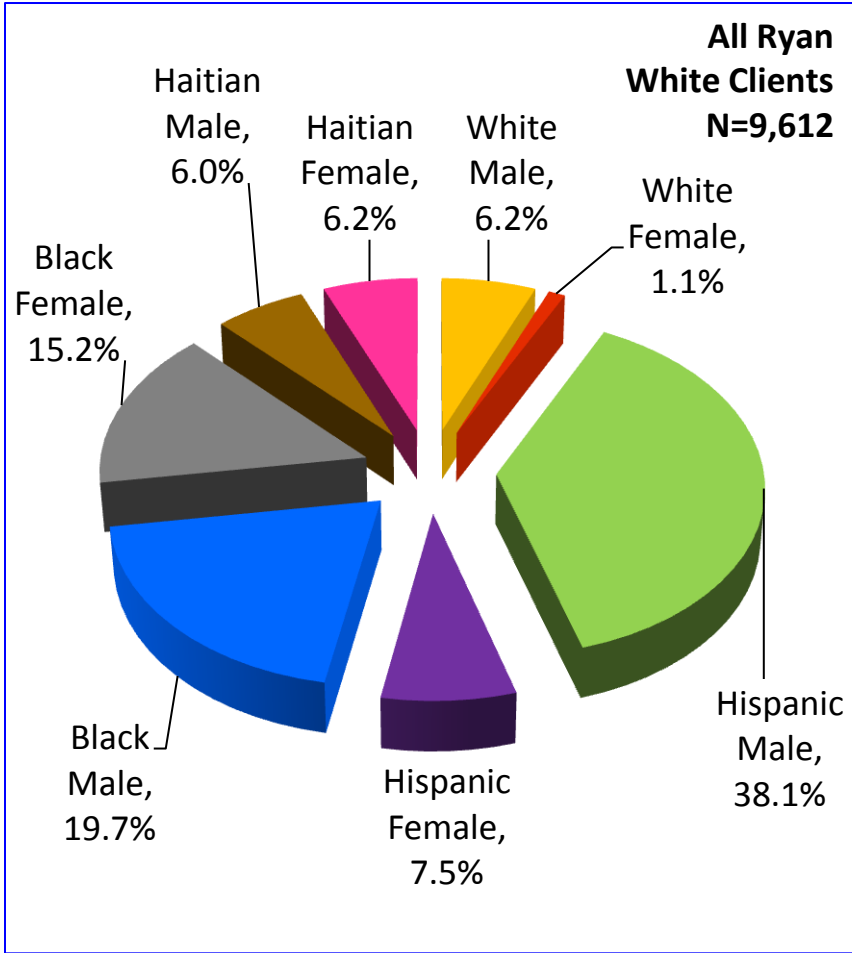
## PLWHA In Care, Ryan White Program

### FY 17 thru FY 21



# Gender by Ethnicity PLWHA In Care, Ryan White Program FY 21

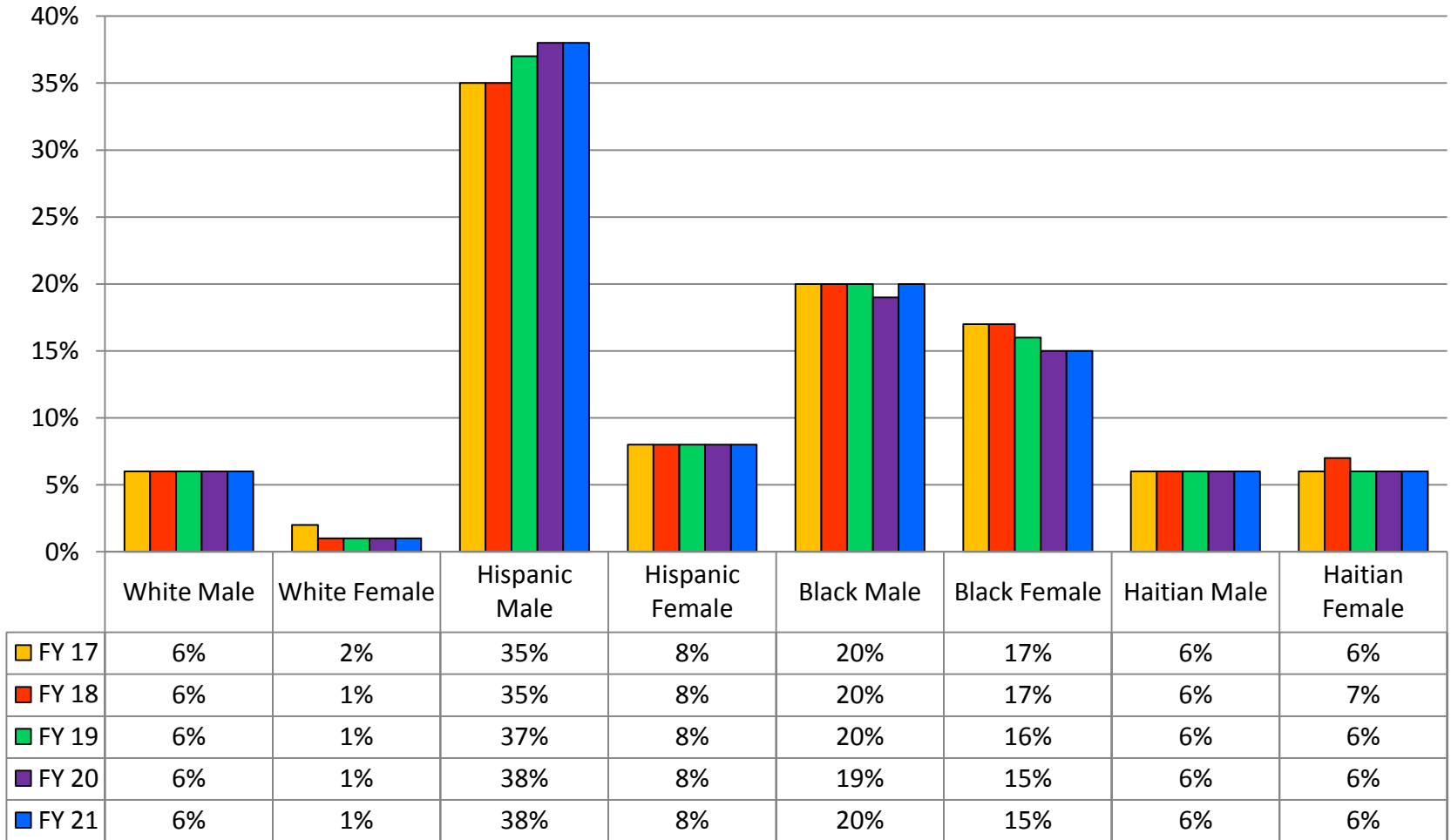
aidsnet.org





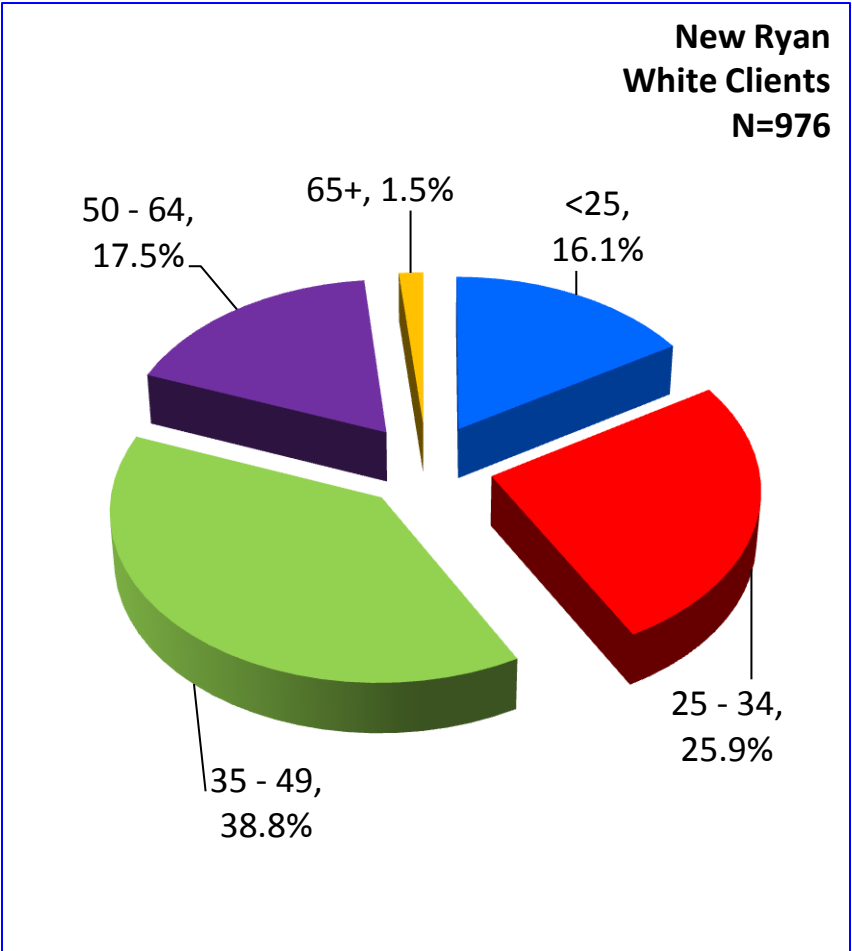
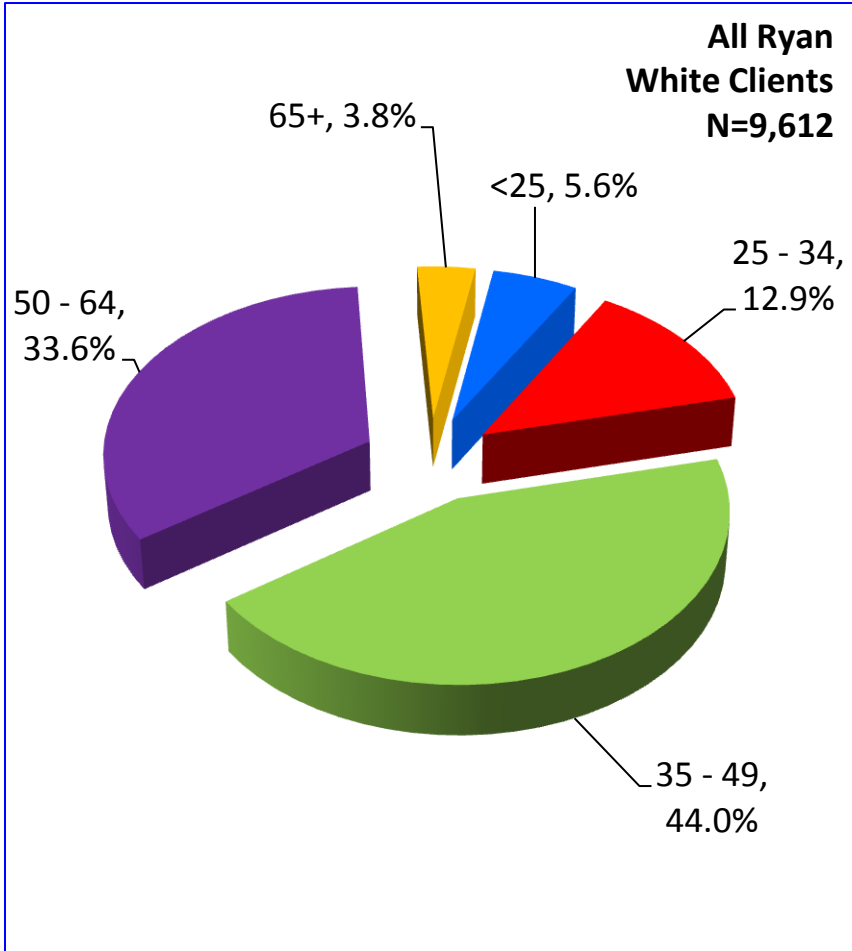
# Race/Ethnicity by Gender PLWHA In Care, Ryan White Program FY 17 thru FY 21

aidsnet.org



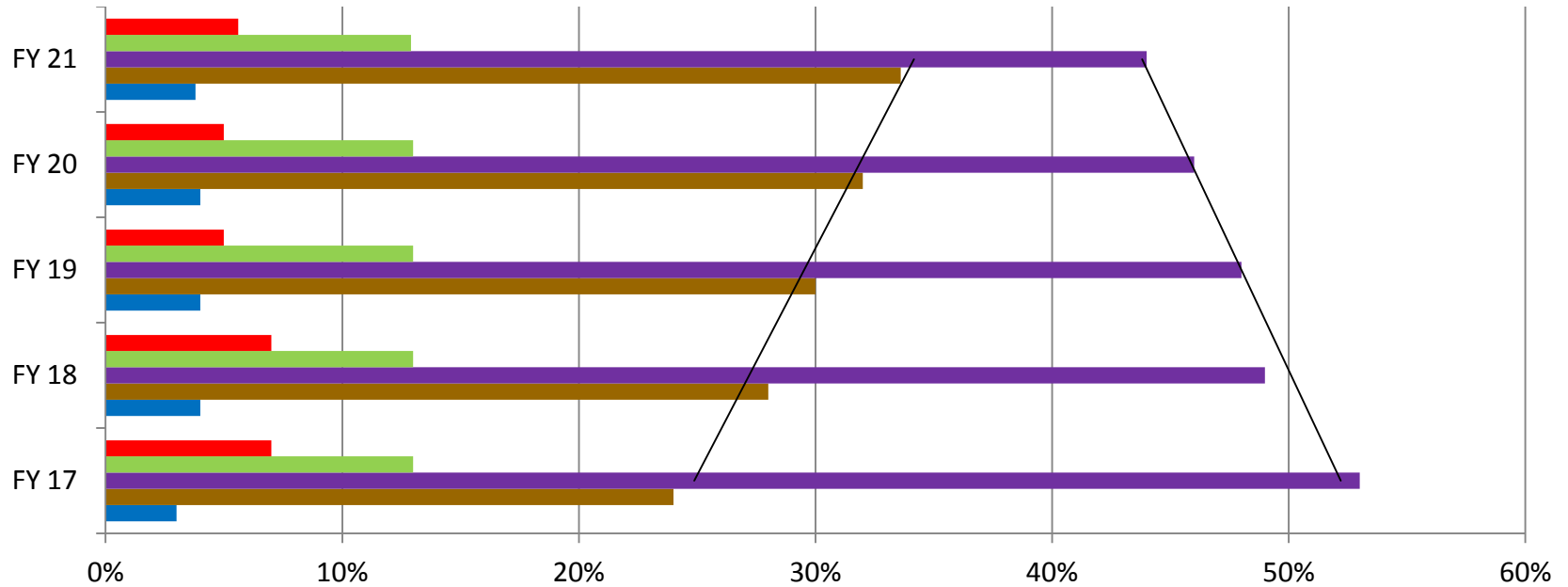
# Age PLWHA In Care, Ryan White Program FY 21

aidsnet.org



# Age PLWHA In Care, Ryan White Program FY 17 thru FY 21

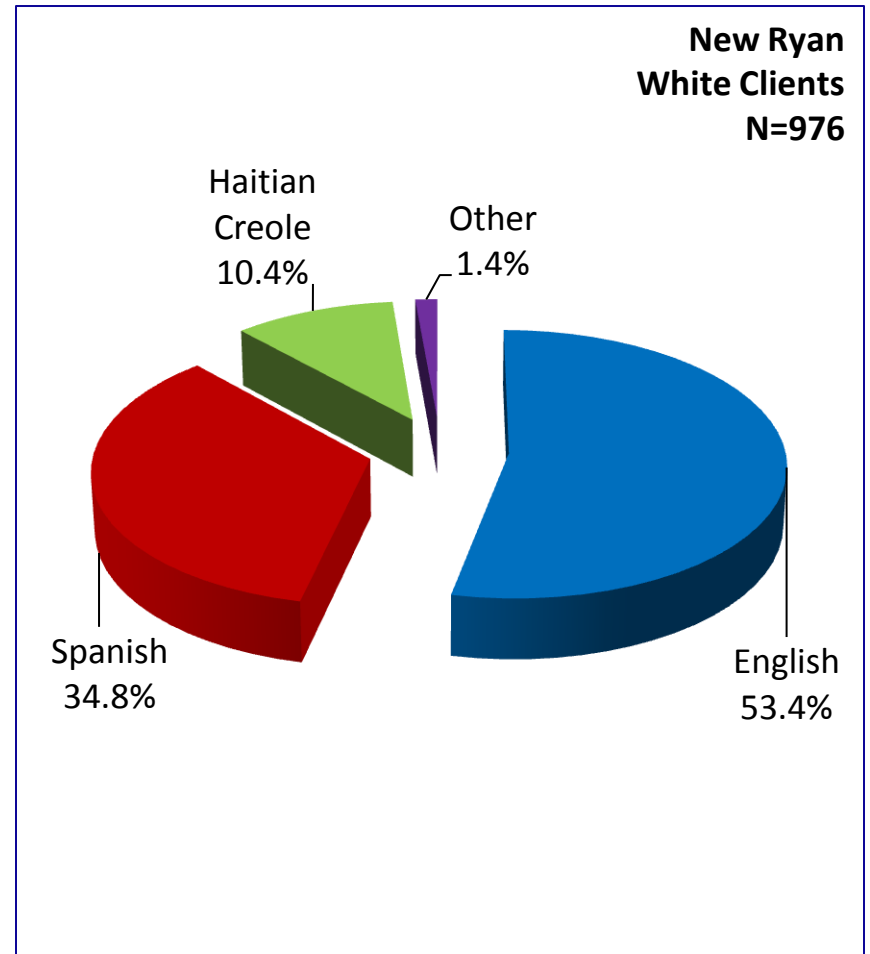
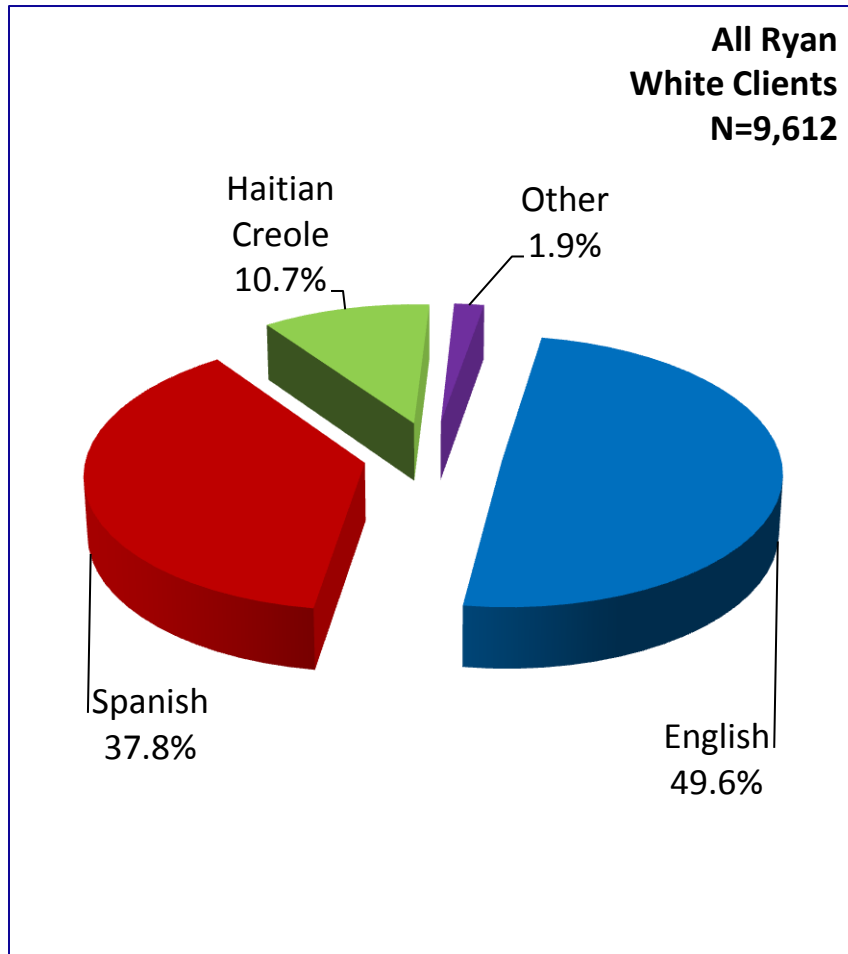
aidsnet.org



	FY 17	FY 18	FY 19	FY 20	FY 21
■ <25	7%	7%	5%	5%	6%
■ 25 - 34	13%	13%	13%	13%	13%
■ 35 - 49	53%	49%	48%	46%	44%
■ 50 - 64	24%	28%	30%	32%	34%
■ 65+	3%	4%	4%	4%	4%

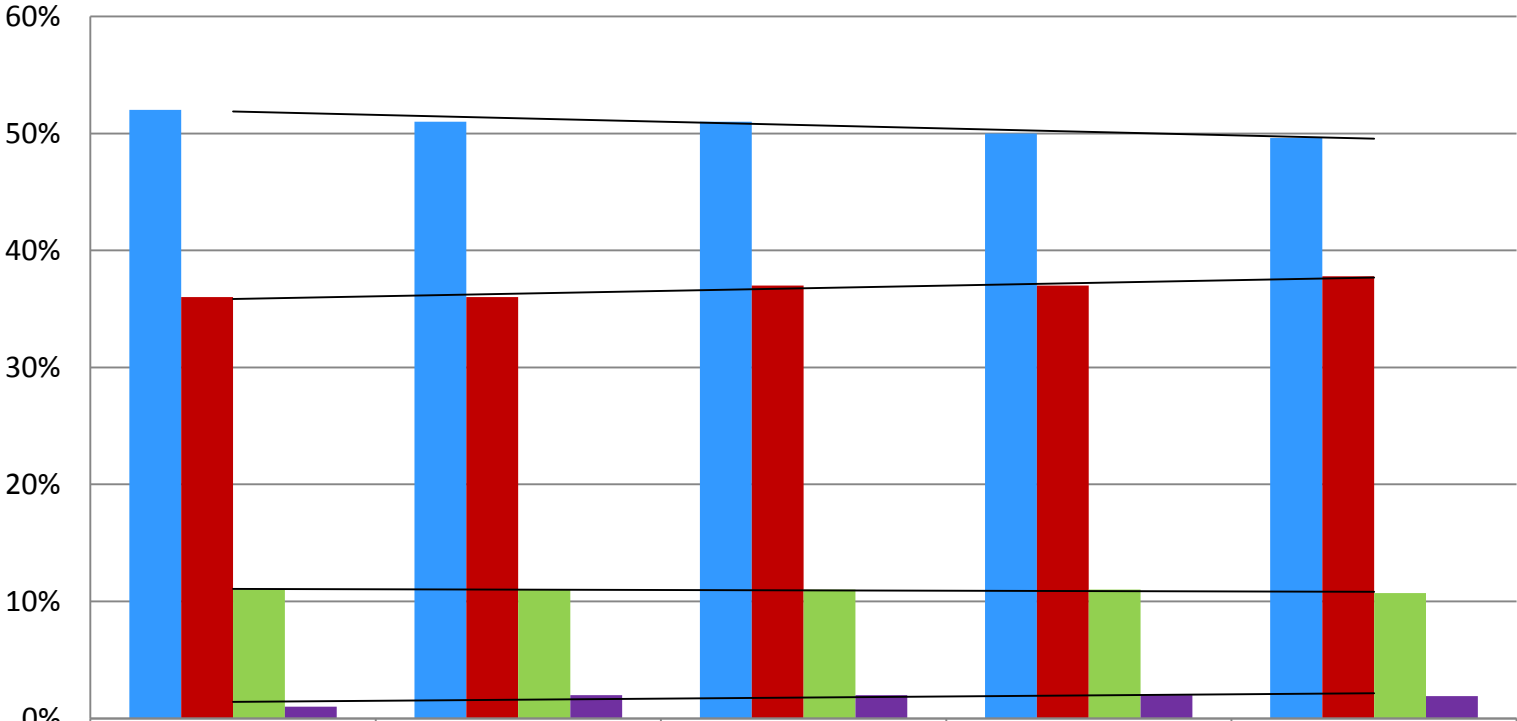
# Primary Language PLWHA In Care, Ryan White Program FY 21

aidsnet.org



# Primary Language PLWHA In Care, Ryan White Program FY 17 thru FY 21

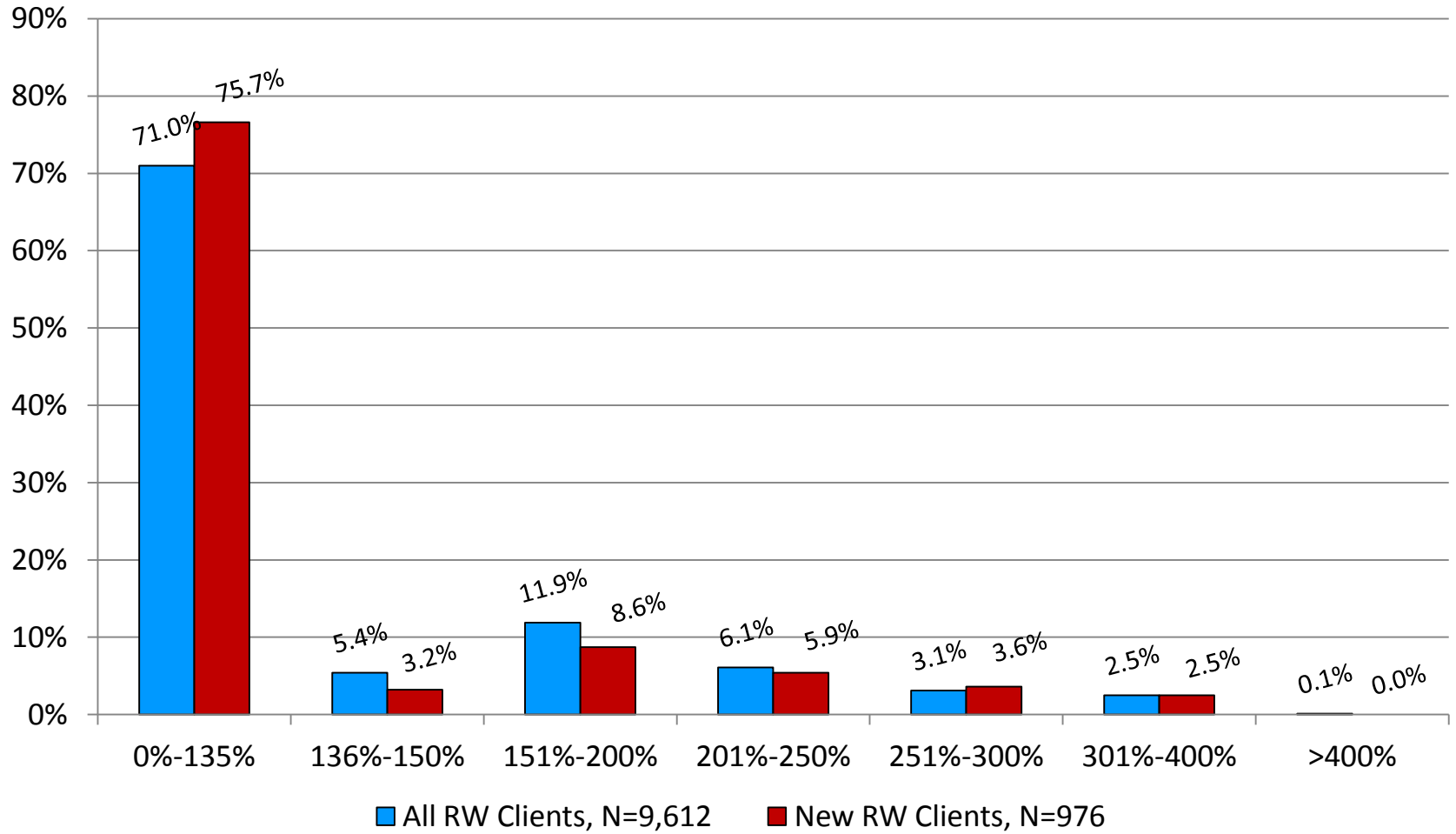
aidsnet.org



	FY 17	FY 18	FY 19	FY 20	FY 21
English	52%	51%	51%	50%	50%
Spanish	36%	36%	37%	37%	38%
Haitian Creole	11%	11%	11%	11%	11%
Other	1%	2%	2%	2%	2%

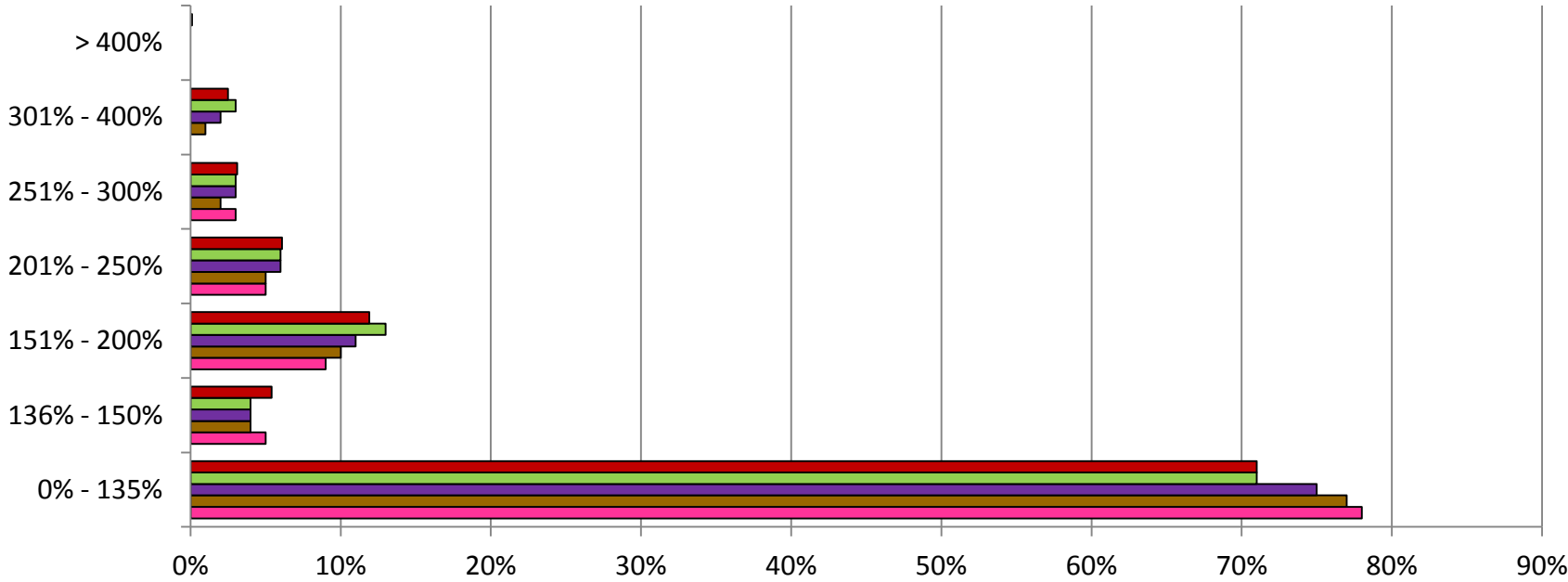
# Income Level PLWHA In Care, Ryan White Program FY 21

aidsnet.org



# Income Level PLWHA In Care, Ryan White Program FY 17 thru FY 21

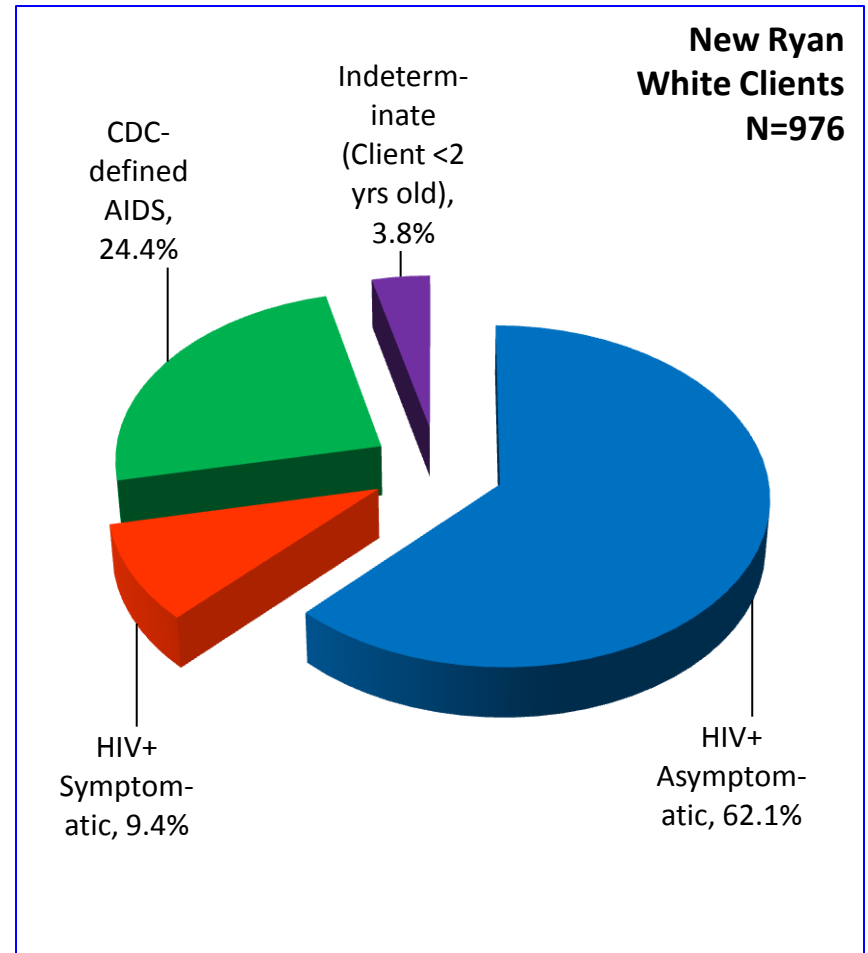
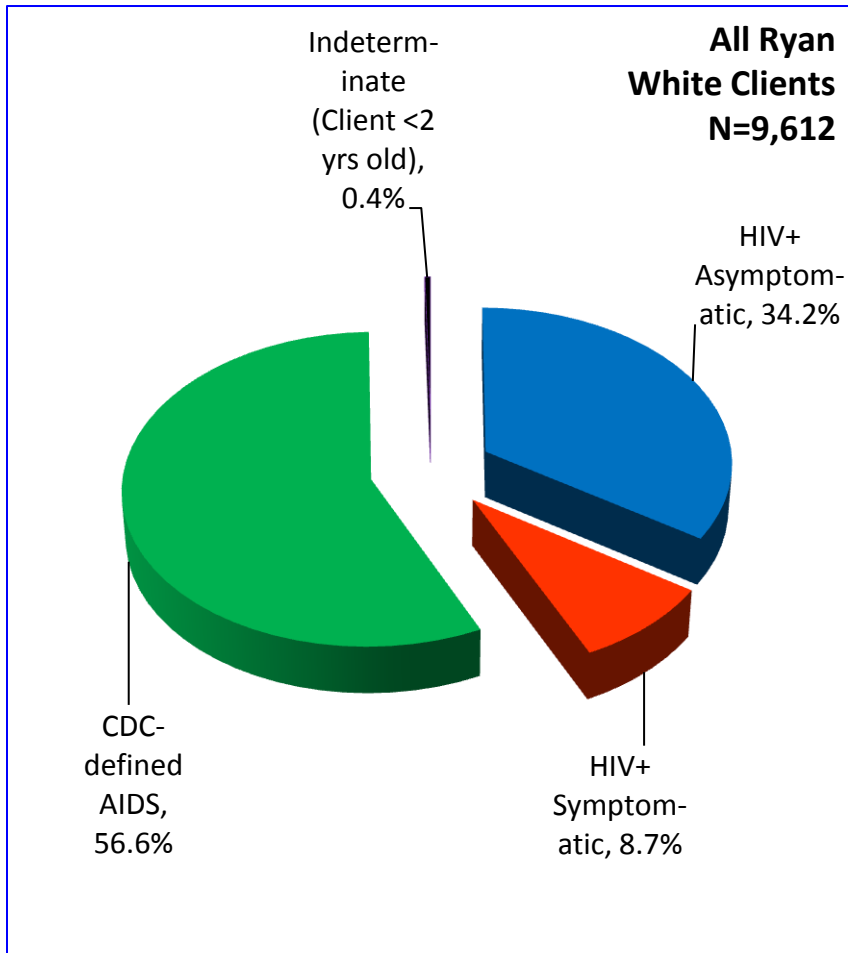
aidsnet.org



	0% - 135%	136% - 150%	151% - 200%	201% - 250%	251% - 300%	301% - 400%	> 400%
■ FY 21	71%	5%	12%	6%	3%	3%	0%
■ FY 20	71%	4%	13%	6%	3%	3%	0%
■ FY 19	75%	4%	11%	6%	3%	2%	0%
■ FY 18	77%	4%	10%	5%	2%	1%	0%
■ FY 17	78%	5%	9%	5%	3%	0%	0%

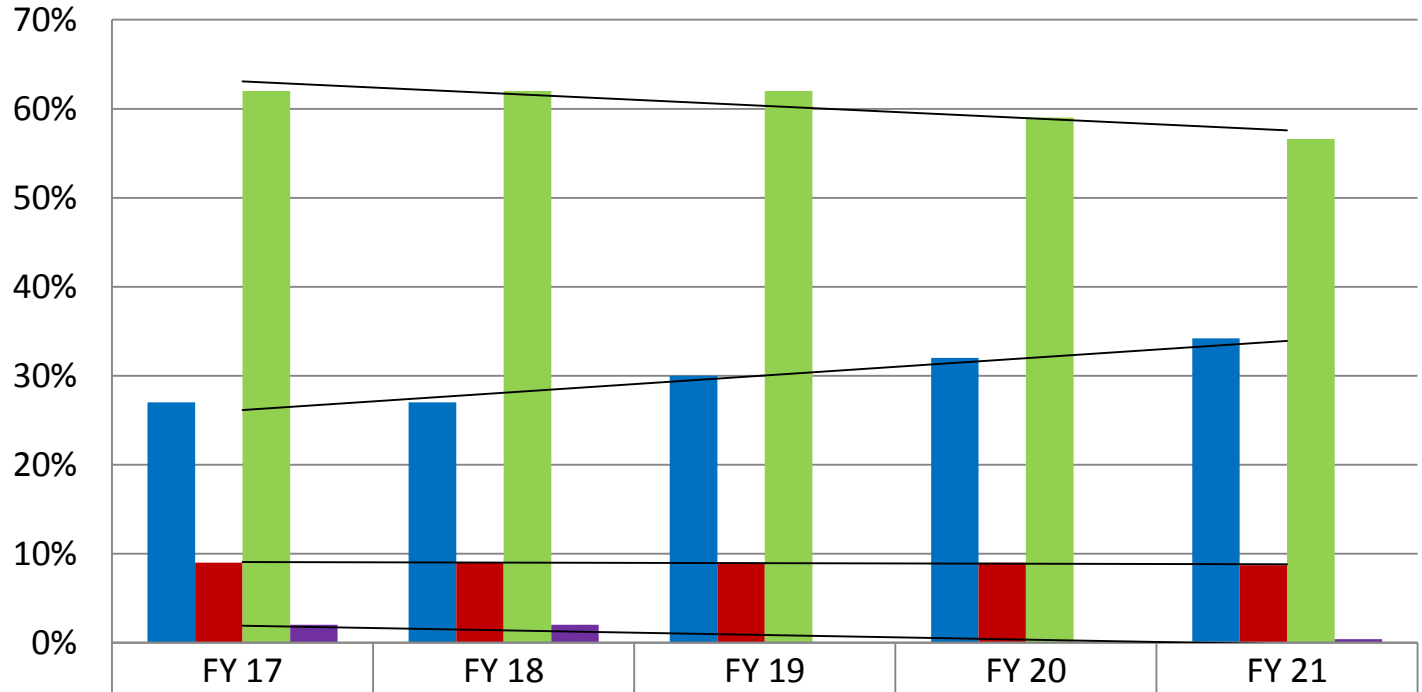
# Current HIV Level PLWHA In Care, Ryan White Program FY 21

aidsnet.org





## Current HIV Level PLWHA In Care, Ryan White Program FY 17 thru FY 21

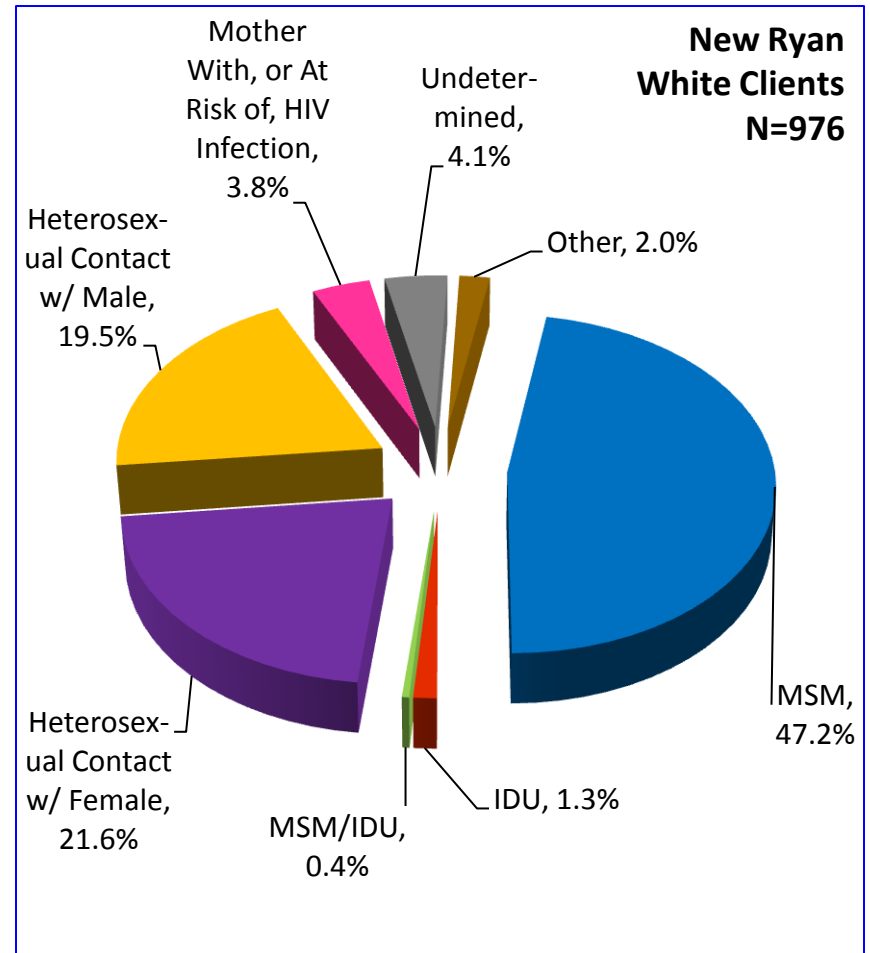
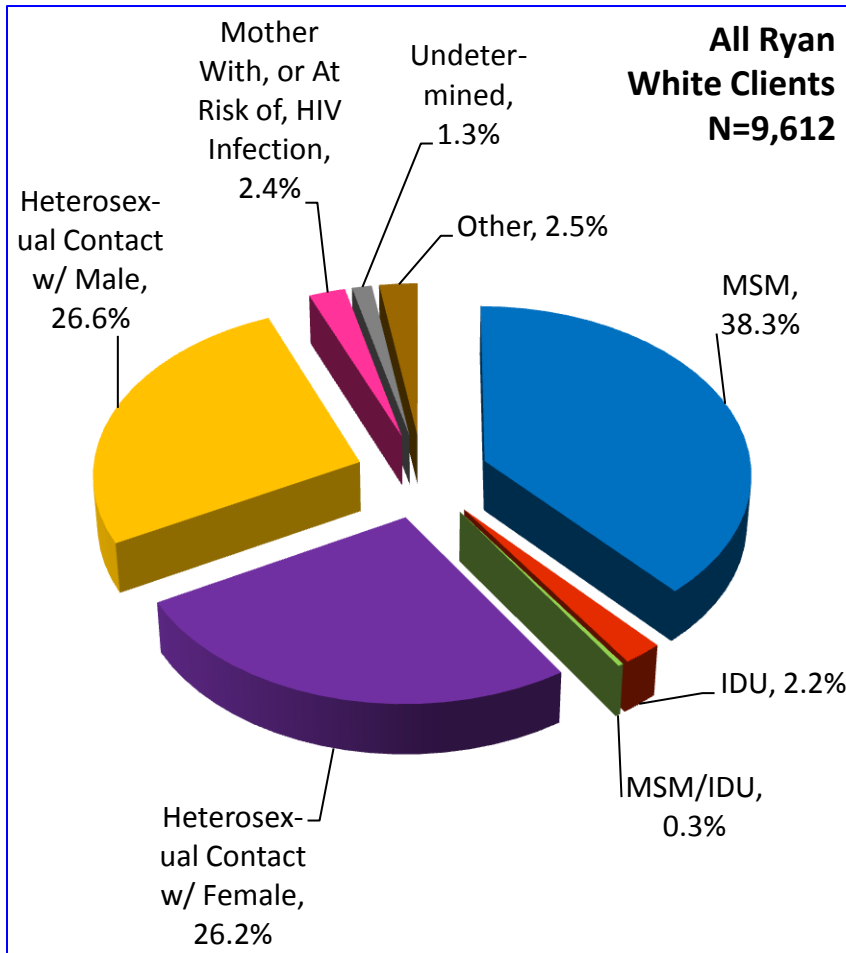


<span style="color: blue;">■</span> HIV+ Asymptomatic	27%	27%	30%	32%	34%
<span style="color: red;">■</span> HIV+ Symptomatic	9%	9%	9%	9%	9%
<span style="color: green;">■</span> CDC-Defined AIDS	62%	62%	62%	59%	57%
<span style="color: purple;">■</span> Indeterminate (Client <2 yrs old)	2%	2%	0%	0%	0%

aidsnet.org

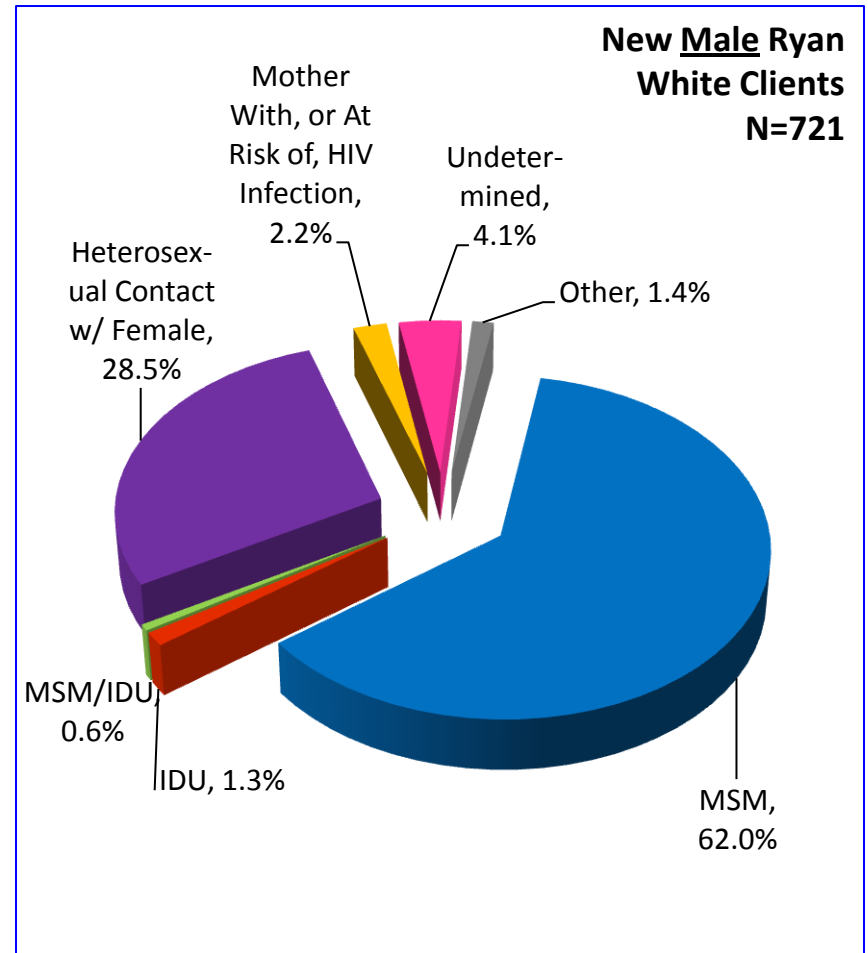
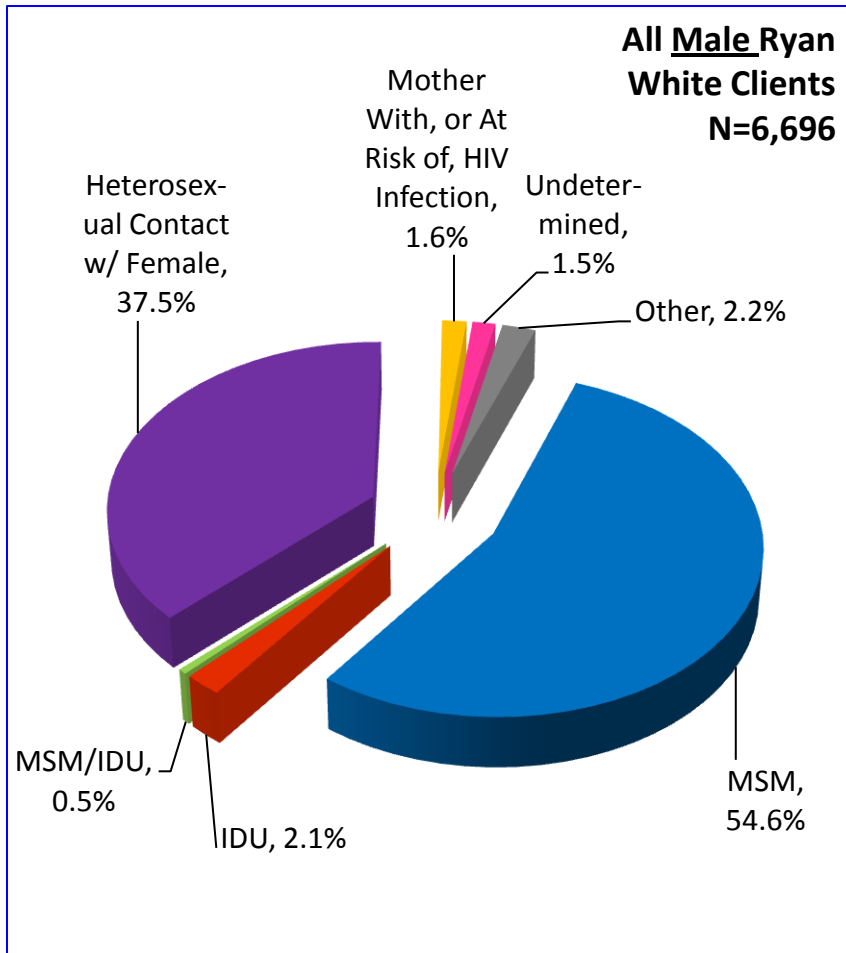
# Primary Exposure Category PLWHA In Care, Ryan White Program FY 21

aidsnet.org



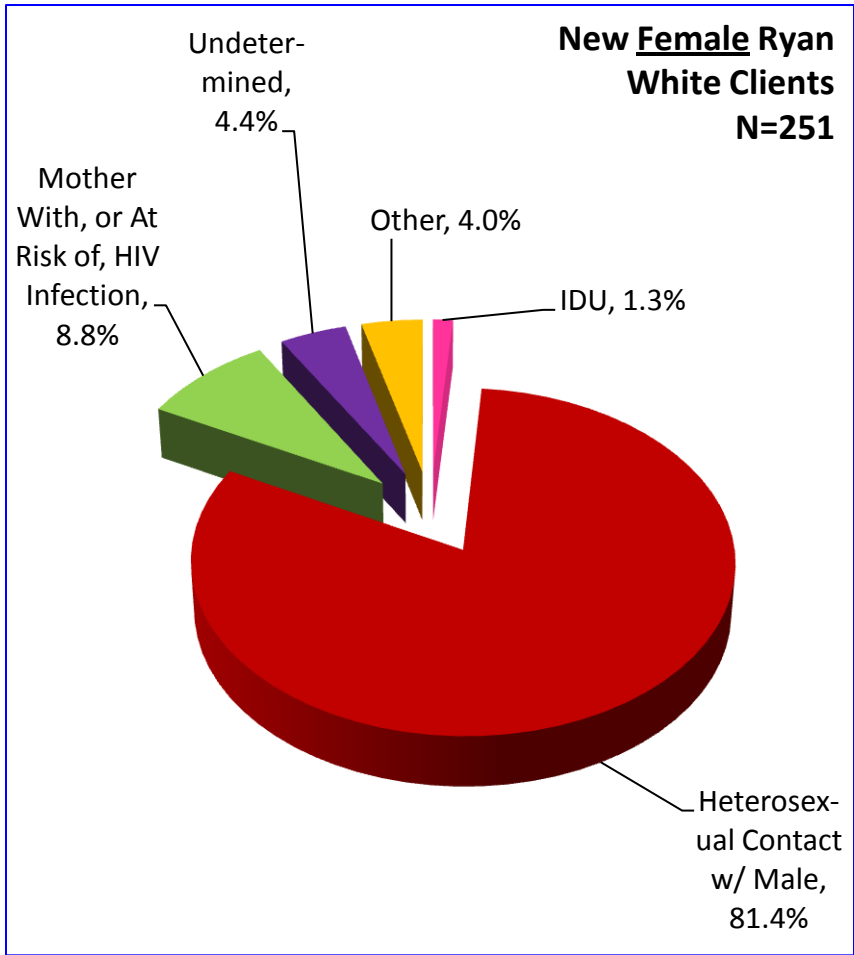
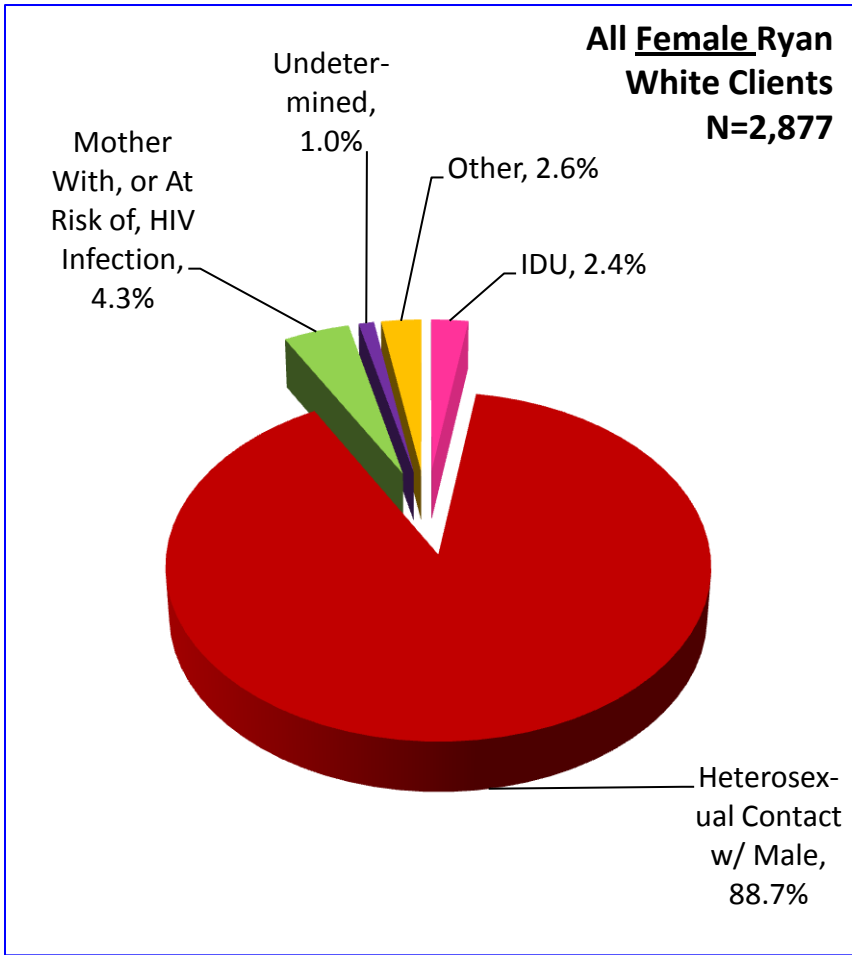
# Primary Exposure Category Male PLWHA In Care, Ryan White Program FY 21

aidsnet.org



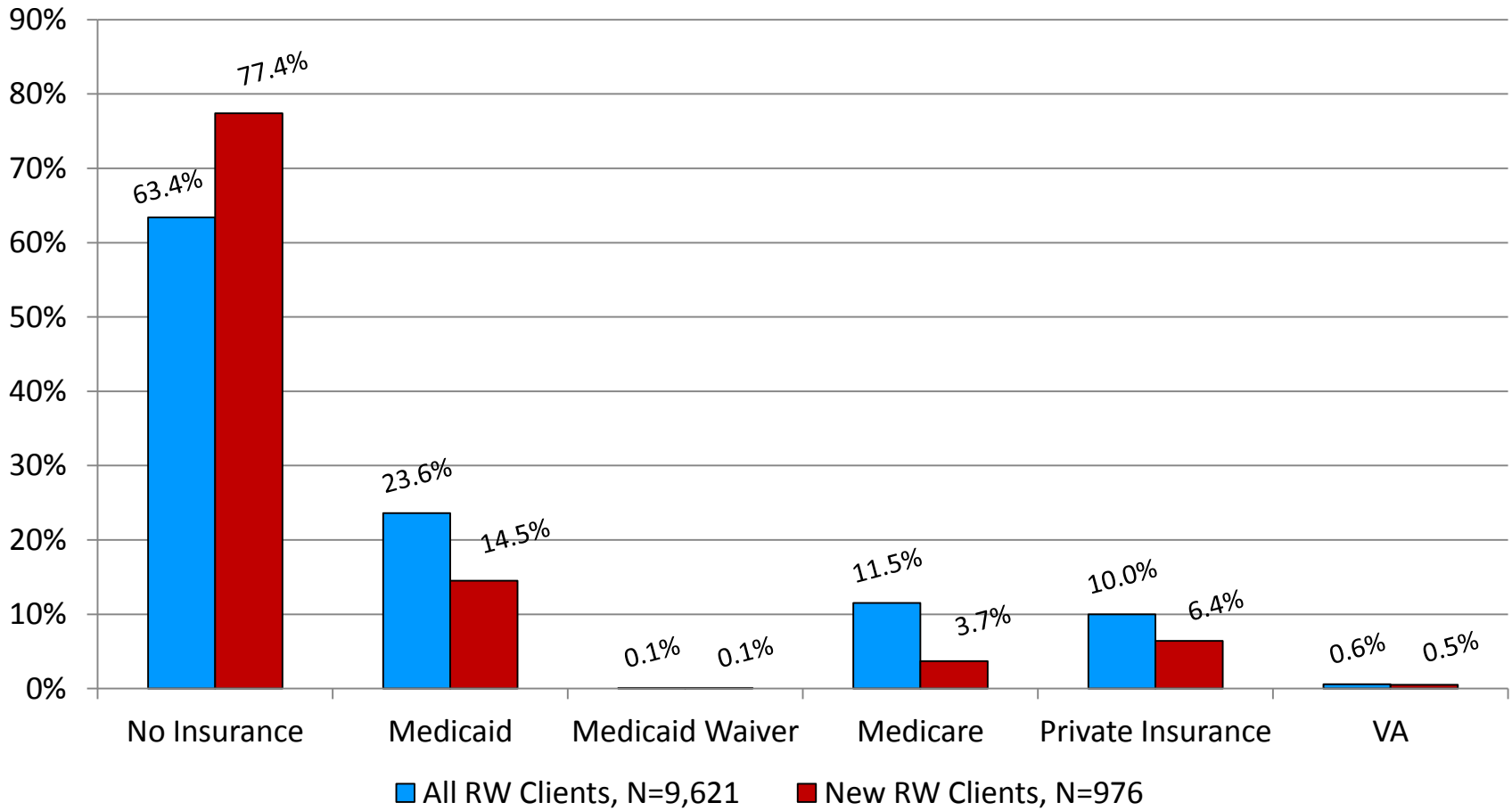
# Primary Exposure Category Female PLWHA In Care, Ryan White Program FY 21

aidsnet.org



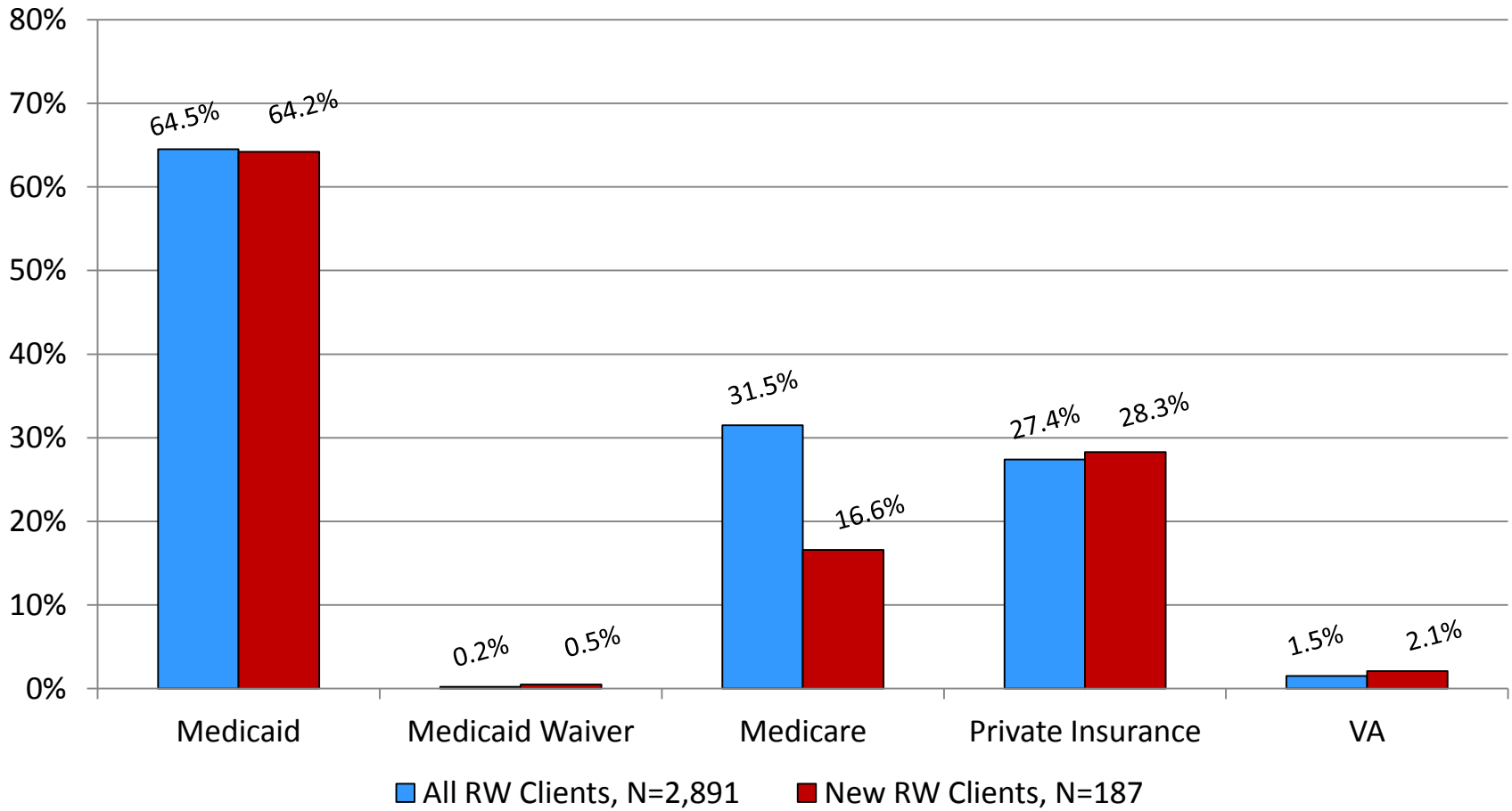
# Insurance Source PLWHA In Care, Ryan White Program FY 21

aidsnet.org



# Insurance Source – Excluding “No Insurance” PLWHA In Care, Ryan White Program FY 21

aidsnet.org



**Thank you for your attention!**

**Any questions?**