

PrEPparation: An FQHC's guide to PrEP implementation

Joey Wynn,
Community Relations Director – Empower U CHC
January 25th, 2016

Ryan White Program's Service Provider Forum

United Way of Miami Dade

Miami, FL 33129

Terminology Reference Guide

PrEP

Pre-exposure prophylaxis

PEP

Post-exposure prophylaxis

TasP

Treatment as prevention

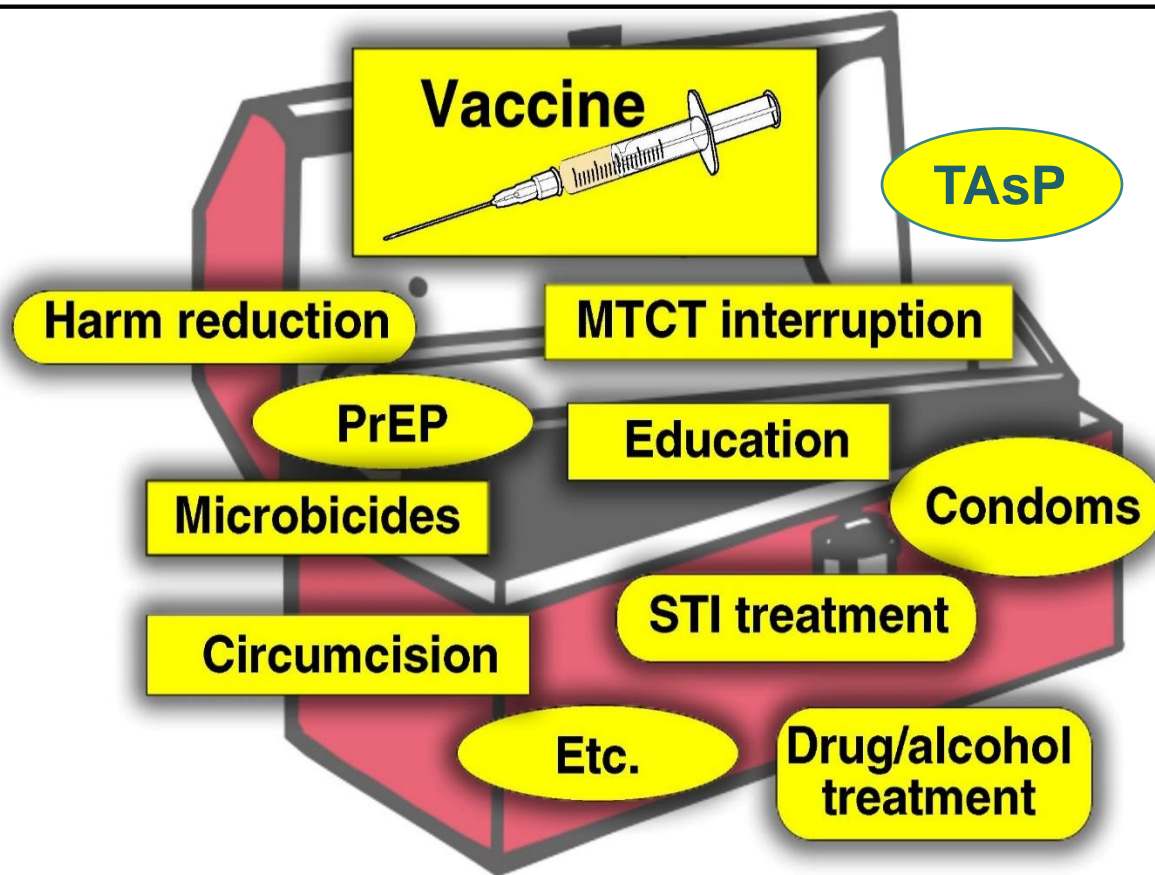
Why is it important to have community involvement and understanding of biomedical HIV prevention and research?





Building a healthier community
Empower "U", Inc.
Community Health Center

A Comprehensive HIV Prevention "Toolbox"



High Impact Prevention and the Future of the HIV Epidemic in the United States

Jonathan Mermin, MD, MPH

Division of HIV and AIDS Prevention, NCHHSTP
Centers for Disease Control and Prevention

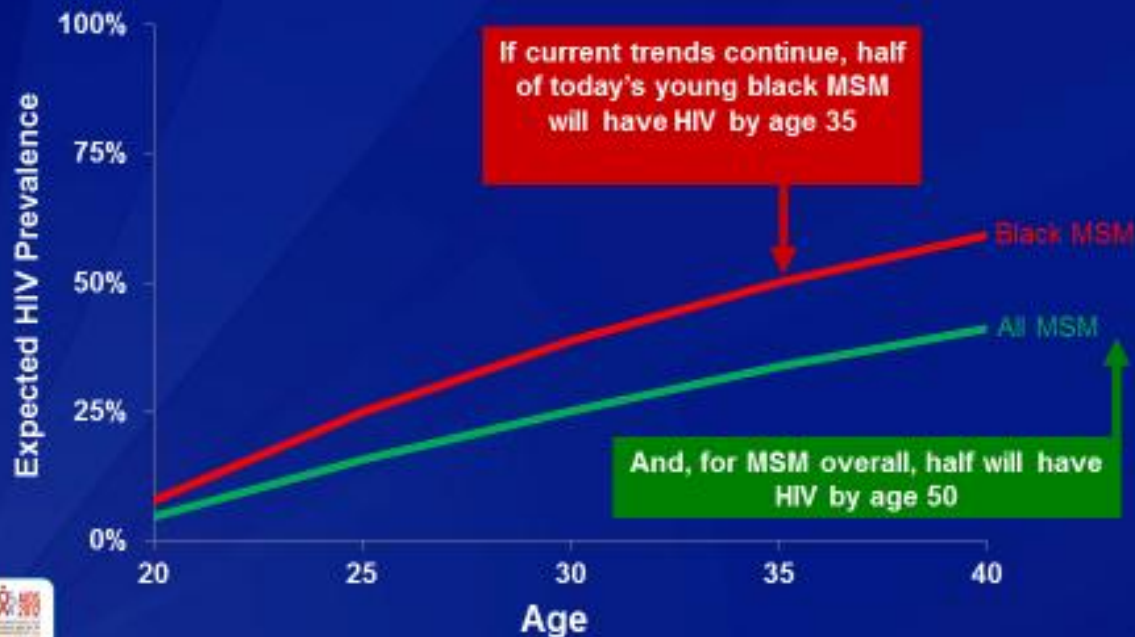


National Center for HIV/AIDS, Viral Hepatitis, STD, and TB Prevention
Division of HIV/AIDS Prevention



The U.S. HIV Epidemic: Where We Stand

Lifetime Risk of HIV Infection among MSM



Agency Background:

Empower U was founded in 1997 as a 501(c)3 nonprofit organization. In 2012, EUCHC became an FQHC.

Originally started to provide HIV services such as C & T and outreach, case management & Ryan White funded activities to the general population in the Liberty City area.

EUCHC quickly grew to specialize in provision of HIV prevention education, social services and medical care for HIV/AIDS to men and women living with the disease and to gay and bisexual men.

In the past year, EUCHC has expanded to provide comprehensive medical services to the entire community, and established a program for Transgender women of color (Trans Illuminati)

PrEP Care Team

Provider

Clinic staff

Eligibility

HIV testing staff

Patient Educators

PrEP Candidates

Who?

Discordant Couples

Individuals with recent diagnoses of an STI

Individuals who frequent high-risk venues

PrEP Candidates

Access Points?

Internal Provider

HIV testing staff referral

Community referrals

Walk-ins (Marketing)

PrEP Education Strategy

Internal:

- Team meetings
- Staff PrEP Rallies
- Provider Champions

External:

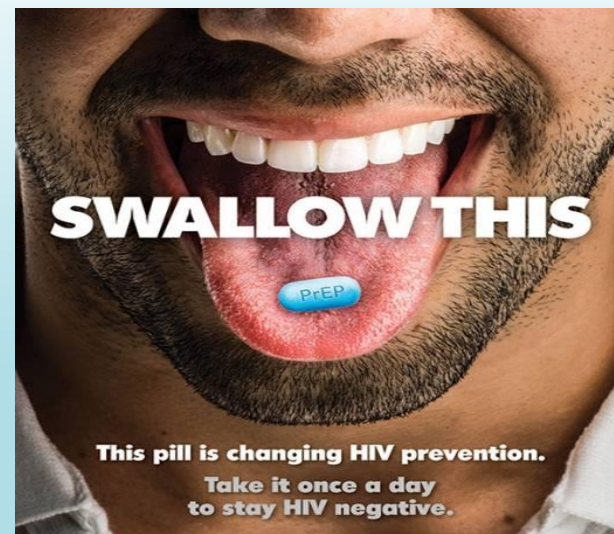
- Community Forums
- Focus Groups
- Community Health Workers
- PrEP “Down It” Marketing Campaign



Remaining HIV-negative is a positive.

YOUR BODY. YOUR HEALTH. YOUR CHOICES. YOUR LIFE.
 The chance to end the spread of HIV in our lifetime is here. The choice to take action is yours. PrEP is an FDA-approved medication that, when taken once daily, significantly reduces the risk of contracting HIV from a positive sexual partner. It's your life. Own it.

(832) 548 5221 | LegacyCommunityHealth.org/PrEP | [#AreYouPrEPared](https://twitter.com/AreYouPrEPared)



I AM PREP NOV. 12 LAUNCH PARTY



HÔTEL
GAYTHERING

Join us Nov. 12 at 9pm
 at Hôtel Gaythering
 1409 Lincoln Road
 for our launch
 of Miami's
I AM PREP
 campaign &
PREP SCHOOL

**Free HIV
 testing by
 Latinos
 Salud**

**Free Absolut
 cocktails
 the first hour**

**Questions? Visit
howtogetprep.com**

PrEP Workflow

Patient Navigators:

Education session occurs with Patient Navigator, regardless of point of entry

Patient Navigators schedule Eligibility and PrEP labs

Labs are ready for 1st Provider PrEP visit

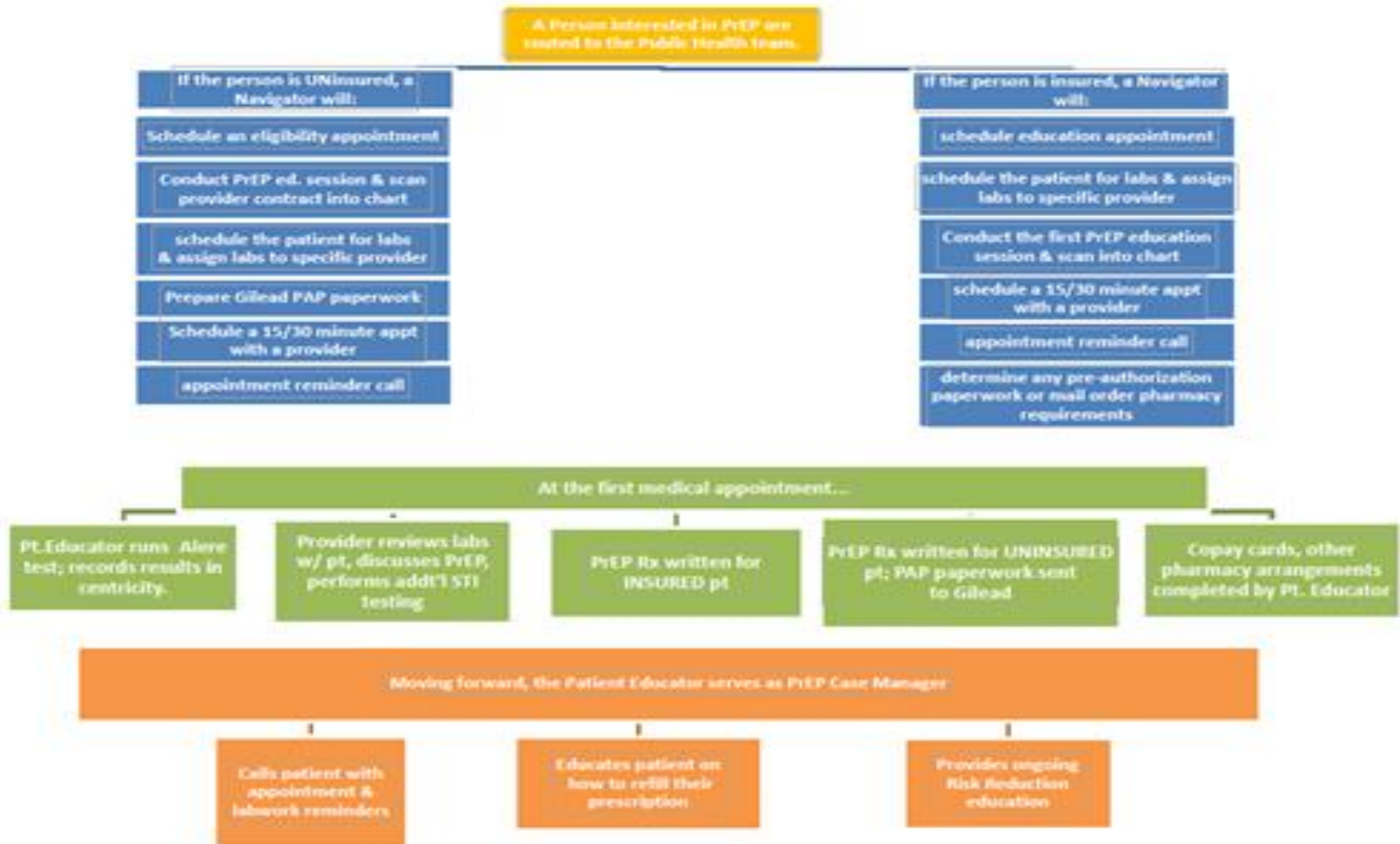
PrEP Workflow

Initial Provider Visit:

Provider discusses lab results, PrEP protocol and patient readiness (agreement form).

Eligibility specialist were trained to help uninsured patients apply for Gilead’s PrEP Patient Medication Program

PrEP Workflow



PrEP Access

Medication Access:

Gilead PrEP Medication Assistance Program provides only a 90-day supply. Labs must be done before next provision of medication

Lab and clinic visit costs are covered through Legacy’s traditional eligibility process

Insurance companies are covering PrEP

Medicaid covers PrEP

PrEP Talking Points

HIV- Prevent New HIV Infections

TALKING POINTS FOR DISCUSSING THE COST OF PREP WITH CLIENTS AND INTERESTED PARTIES

PrEP involves more than taking medication; it also includes quarterly lab and clinic visits.

PrEP isn't free – but we will do our best to help make it affordable for you.

We can help you apply for Gilead's Patient Assistance Program, and if you're approved you will be able to receive Truvada for free.

If you have insurance, you can use your benefits. We can help you learn about your benefits if you're not sure what they are.

If you don't have insurance, we can make you an appointment with our eligibility department; they are the only ones who can determine what you do/don't qualify for.

If you don't have insurance, Gilead offers a Patient Assistance Program that you may qualify for; however, it only covers the cost of the medication. Our eligibility department will help determine what grants you may qualify for to cover the costs associated with PrEP (labs, provider visits, etc.)

In order to get started on PrEP we'll need to make you an appointment with a Patient Educator.

PrEP Talking Points

This information is for staff only to help gain a stronger understanding of the costs associated with PrEP

If the client has **private insurance** (this includes employer-based plans, plans purchased on the healthcare marketplace and Medicaid)...

Medical appointments – every time a client has an appointment with a healthcare provider (doctor, nurse practitioner or registered nurse) they are required to pay their **copay**. This is the standard fee set by their insurance company, and is due at the front desk for every visit.

Laboratory fees – every time a client has a specimen (blood, urine, etc) sent to the lab, they will receive a bill from the lab company that processes the specimen. For example, individuals who have Aetna receive bills from Quest Diagnostics. Legacy **does not** collect a fee at the front desk for lab visits or lab work. Clients are encouraged to call their insurance company to find out what their lab benefits are; the most common type of coverage is **co-insurance**. In this instance, a patient will pay a percentage of the overall cost of the lab test. For example, if a Syphilis test costs \$50, then the lab company (Quest, LabCorp, etc) will send out two bills: one bill will go to the insurance company; the other bill will go to the client. The percentage of the lab work which the client is responsible for will vary among insurance companies.

Clients are required to have an initial set of labs done in order to get on PrEP. This initial panel includes the following tests: Complete Blood Count (CBC), Complete Metabolic Panel (CMP), Hepatitis C antibody, Hepatitis A antibody, Hepatitis B panel, HIV 4th generation screening, Syphilis screening, Chlamydia screening and Gonorrhea screening. These tests are *non-negotiable* and are pre-set for the PrEP panel.

Clients should be prepared to receive a separate bill for labs at the address listed on their insurance plan. Legacy is not responsible or accountable for mailing out these bills.

Medication – Every insurance plan has a unique set of pharmacy benefits called a **formulary**³¹; the cost of the medication at the pharmacy depends on where the drug falls within the formulary. Copay cards are available through the Gilead to help bring the cost down at the register, and the Patient Educators can assist clients in obtaining them.

Some insurance companies require certain medications to be filled through mail-order companies. If this is the case, clients will be responsible for mailing in their prescriptions

PrEP Documentation

ICD-10 code utilized for PrEP

Z41.8 “Encounter for other procedures for purposes other than remedying health state”

Z79 “Long Term drug use for Prophylactic Purposes”

Electronic Health Records “Enabling Service Form”

Internal PrEP database

PrEP Patient Summary

PrEP patients (October 2015 to present)

Gender: 95% Male, 5% Female

Payer Source

26% Private insured

51% Gilead PAP

13% Medicaid

Race/Ethnicity

2% Caucasian

59% African American

37% Latino

Ages:

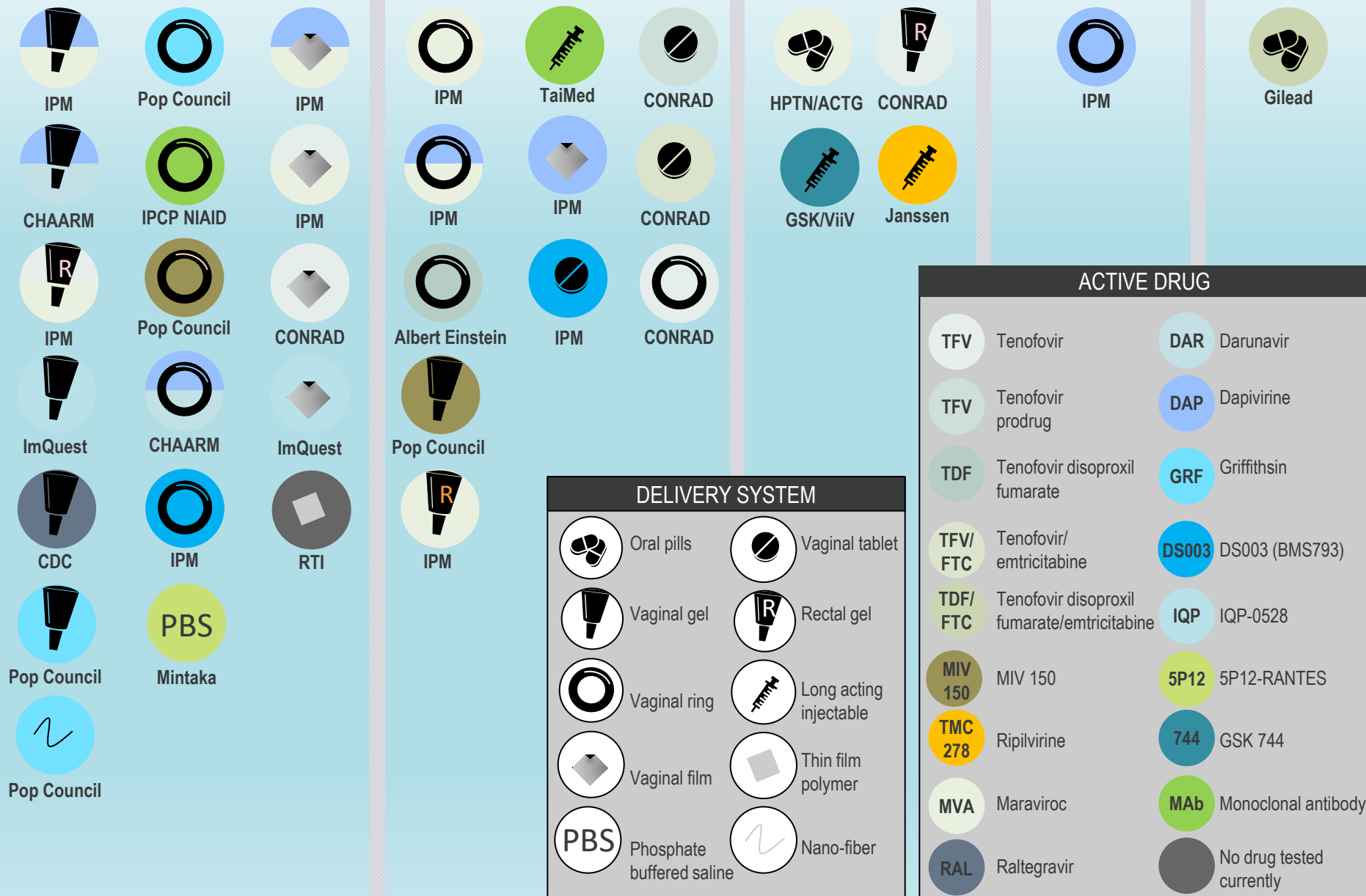
17% 18-24 yrs. old

26% 25-29 yrs. old

17% 30-34 yrs. old

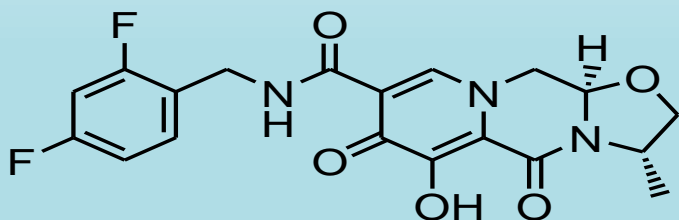
40% 35+

PHASE IV

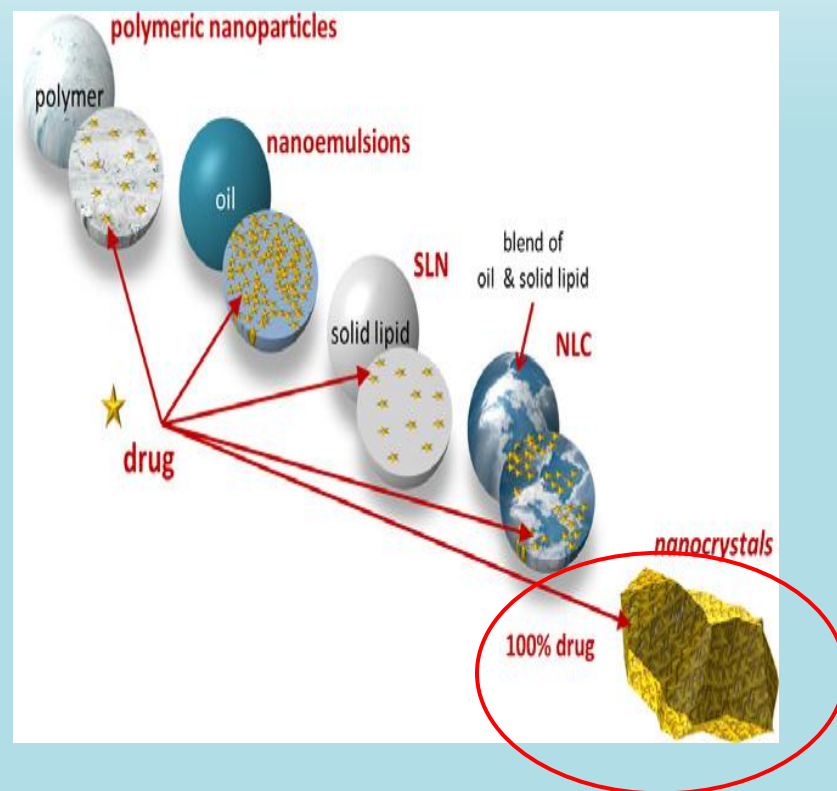
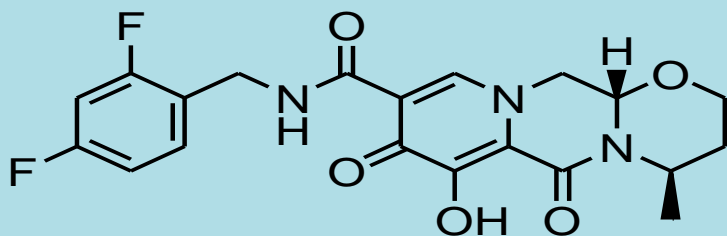


GSK744 Long Acting Is Formulated as a 200 mg/mL Nanosuspension

GSK1265744 (GSK744)

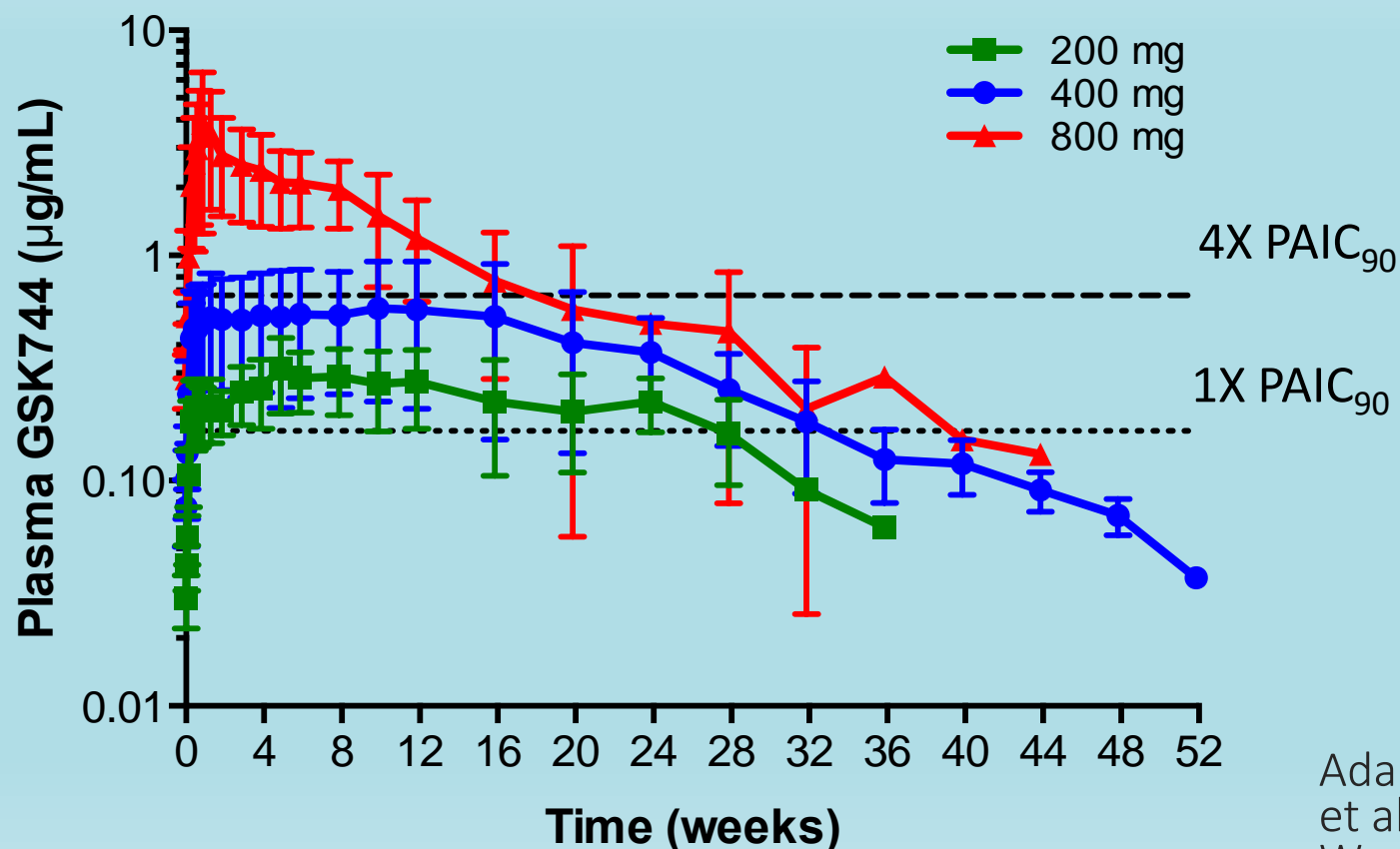


Dolutegravir



1. Müller et al. *Eur J Pharm Biopharm.* 2011;78:1-9. 2. Spreen et al. *IAS 2013; Kuala Lumpur, Malaysia. Abstract WEAB0103.* 3. Min et al. *ICAAC 2009; San Francisco, CA. Abstract H-1228.* 4. Taoda et al. *International Congress on Drug Therapy in HIV Infection 2012; Glasgow, Scotland. Abstract P206.*

Pharmacokinetic Evaluation of a Single Intramuscular GSK744 LA Injection in Human Volunteers



Adapted from Spreen
et al. IAC 2012;
Washington, DC.
Abstract TUPE040.

Barriers & Obstacles: Essential Elements that must be addressed to ensure Success!

- **Daily Medications:** Humans are bad at it!!! Treatment Preparedness / Readiness is critical to increase the likelihood of success; it can be accomplished~!
- **Long-term adherence is difficult:** High level of discipline and structure needed in order to miss as few doses as possible
- Some people do experience side effects, mental health issues, difficulty with overall costs, healthcare access in general, etc...
- **Individual barriers:** Drug or alcohol use, Problems at work or in personal relationship, readiness relapse, etc... Needs to be part of a comprehensive program that has a focus on the entire person, not just HIV.....
- **System related barriers:** Insurance coverage, stock-outs, stigmatization and more.... This is not impossible, but people must be prepared for what needs to happen in order for them to begin, be successful in missing the fewest doses possible, staying on for a lengthy duration.

PrEP: Lessons Learned

- Preparation is key! Think through logistics carefully
- Keep in mind PrEP points of entry
- Providers must be familiar with PrEP protocol and necessary follow-up appointments
- Provider PrEP champion helps with “buy-in”
- Rapport between Patient and Patient Navigator is vital
- Eligibility specialist /Pharmacy skilled in medication program
- Prepare for how to properly document in patient’s medical record if working in a EHRS

THANK YOU!!!

Questions?

I can be reached for further information about these materials at jwynn@empower-u-Miami.org