

HIV Among Women in Miami-Dade County, 2019

HIV Among Women

6,675 (25%)

of **27,319** persons living with an **HIV** diagnosis in Miami-Dade in 2019 were **Women**

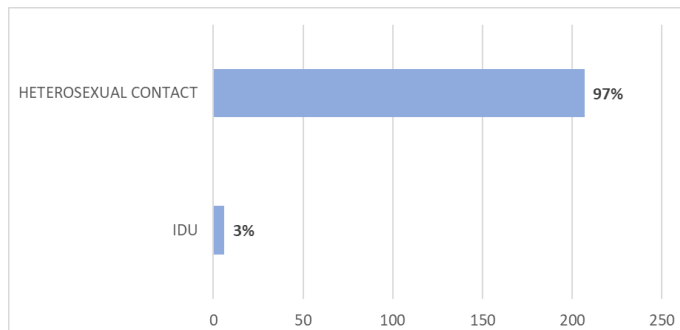
213 (18%)

of **1,181** persons diagnosed with **HIV** in Miami-Dade in 2019 were **Women**

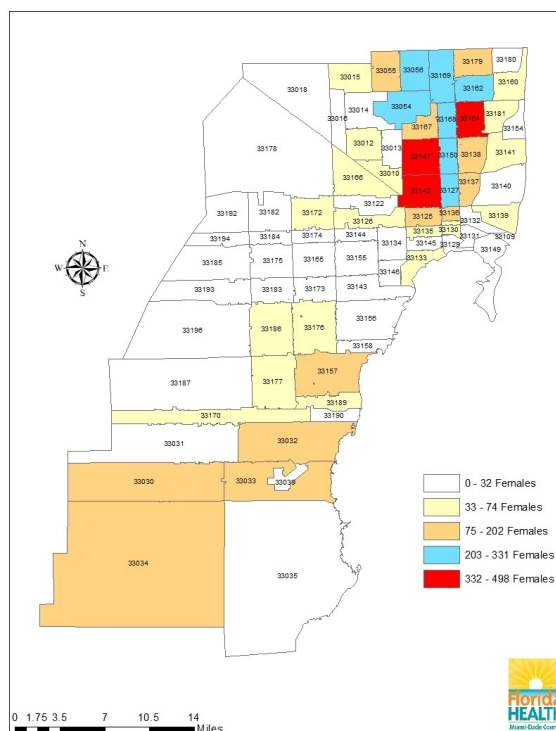
80 (21%)

of **380** persons diagnosed with **AIDS** in Miami-Dade in 2019 were **Women**

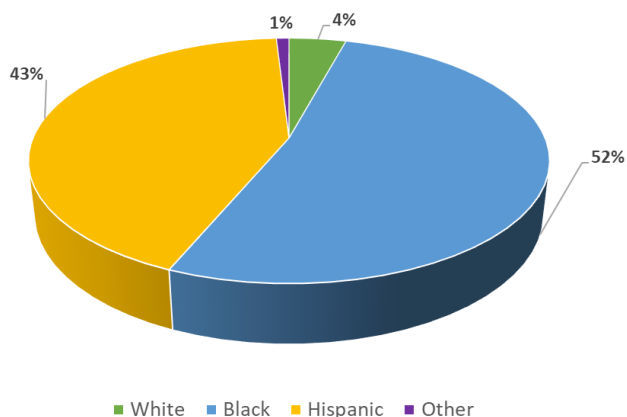
Women who received an HIV diagnosis in 2019 by risk category



Number of females living with an HIV diagnosis in Miami-Dade County in 2019 (n=6,775)

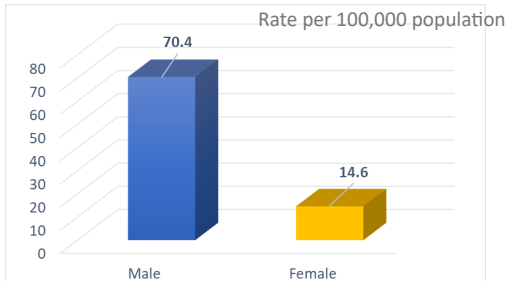


Among women diagnosed with HIV in 2019, Blacks accounted for 52% of cases

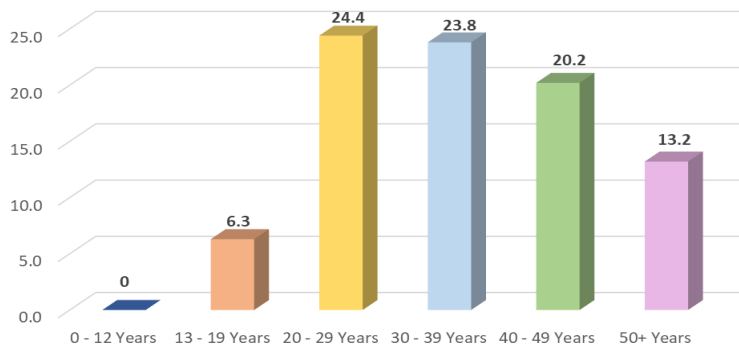


“Other” includes Asian/Pacific Islanders, American Indians/Native Alaskans, and mixed races.

In 2019, males were nearly five times more likely to receive a new HIV diagnosis compared to females

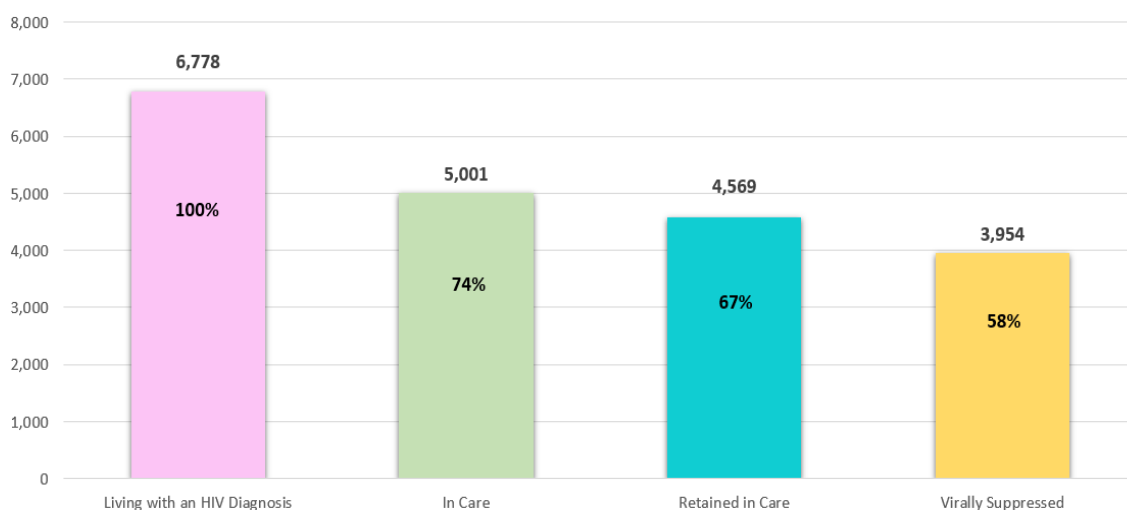


Among females with a new HIV diagnosis in Miami-Dade during 2019, the diagnosis rate was highest among 20—39 year-olds.



HIV Care Continuum for Women living with an HIV diagnosis in Miami-Dade in 2019

The HIV Care Continuum reflects the series of steps a person living with HIV (PLWH) from initial diagnosis to being retained in care and achieving a very low level of viral load in the blood (viral suppression). The risk of HIV transmission is greatly reduced when people have an undetectable viral load.



In Care: Documented Care >1 Time in 2019. Retained in Care: Documented > 2 Times, 3 Months Apart in 2019

26%
Of HIV+ adult
WOMEN were
not in care
during 2019

HIV Screening

All adolescents and adults (ages 13-64) should be tested for HIV at least once during their lifetime. Persons at risk for HIV should be tested **annually**.

Per Florida Law, all pregnant women are to be tested for HIV and other STDs at initial prenatal care visit, and again at 28-32 weeks and at labor and delivery, if status is unknown.

www.knowyourhivstatus.com

Pre-Exposure Prophylaxis [PrEP]

For persons at increased risk for HIV, a pill (Truvada®) once daily, can reduce the risk of acquiring HIV by over **90%**. Condoms are still recommended during sex to prevent other STDs, which can increase the risk of HIV. STDs are on the rise in Florida.

www.prelocator.org

Antiretroviral Therapy [ART]

For persons newly diagnosed with HIV, starting ART with a provider immediately after diagnosis improves health outcomes by preventing disease progression and reducing viral load. To find a care provider or to learn more about resources available to persons living with HIV in Miami-Dade visit:

www.testmiami.org

Florida HIV/AIDS Hotline

1-800-FLA-AIDS (352-2437) English
1-800-545-SIDA (545-7432) Spanish
1-800-AIDS-101 (243-7101) Haitian Creole
1-800-503-7118 Hearing/Speech Impaired

To find a care provider or to learn more about the resources available to persons living with HIV in Florida visit: www.floridaaids.org

Data source: Florida Department of Health. Bureau of Communicable Diseases. HIV/AIDS Section. Epidemiological Profile for Area 11, Miami-Dade County. Data as of June 2020.

