



Vanessa Mills, RN, MPH, BSN
Care 4 U Community Health Center
Chief Operations Officer
[*vmills@care4uchc.org*](mailto:vmills@care4uchc.org)
(305) 835-0101

C4U MAI CQI

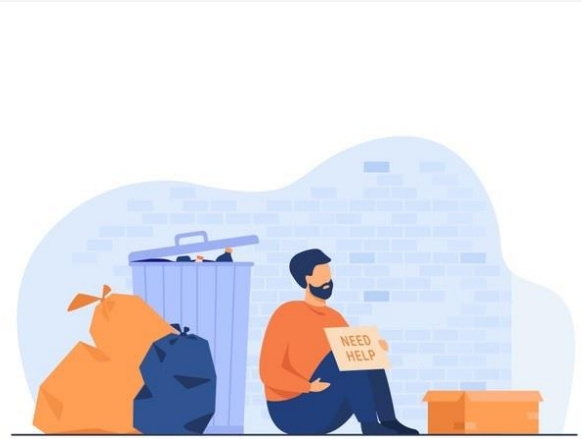
Special Project

Project Eligibility Criteria

Target Population

- Black and Hispanic
- Male and Female
- MSM and Heterosexual

Major Risk Factors → → →



Homelessness



Unemployment



Substance Use



HIV Stigma

Project Eligibility Criteria (cont.)

Overall, 49 HIV+ clients were selected for review for the MAI CQI Project. Clients **included** in the sample:

- Had received Ryan White MCM and OAH
- Were enrolled between March 1, 2020 and March 31, 2021
- Had two or more Viral Load (VL) measures

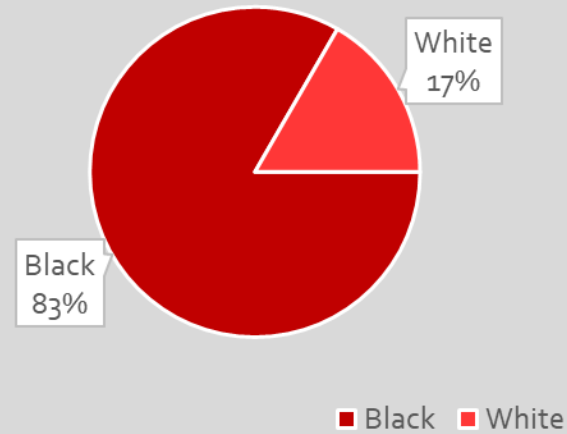
Of the 49 clients reviewed, the 24 clients who met the enrollment criteria and RW MAI eligibility were included in the C4U MAI CQI Project sample. 25 clients were **excluded** from the sample for the following reasons.

- 13 were not enrolled in the MAI CQI special project due to incomplete eligibility
- 9 enrolled after March 31, 2021 and had only 1 VL measure
- 3 received MCM services only

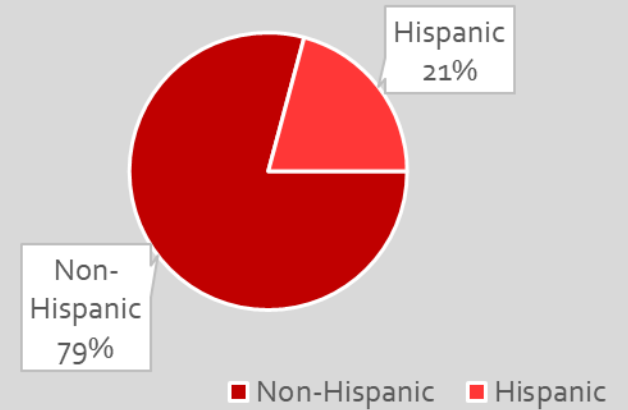
Reviewed	Dropped Out	MCM Only	MCM + OAH	1 VL Measure	2 VL Measure	Total Participants
49	13	3	33	9	24	24

Project Sample Demographics

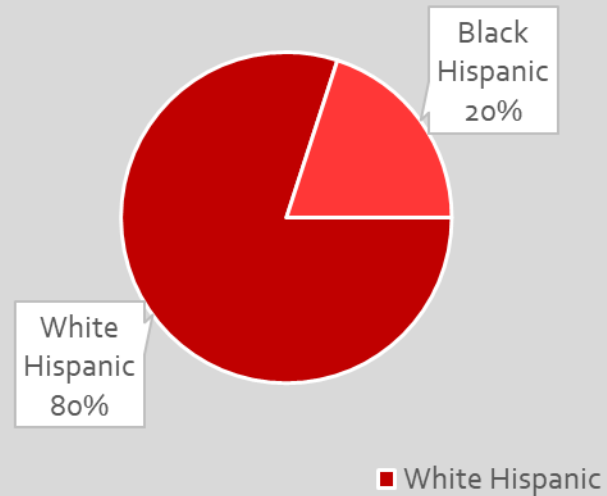
Clients by Race (N=24)



Clients by Ethnicity (N=24)

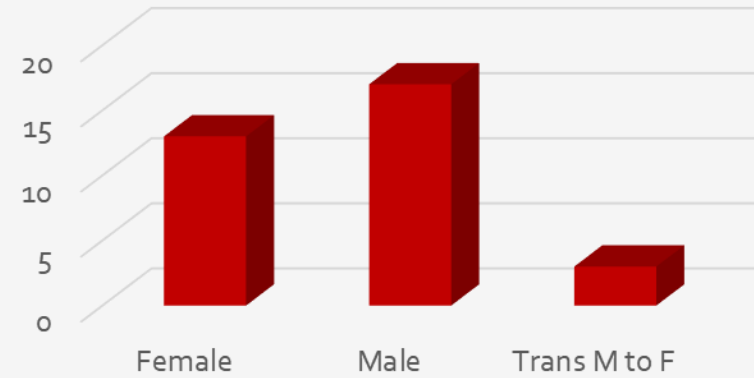


Hispanic Clients (N=5)

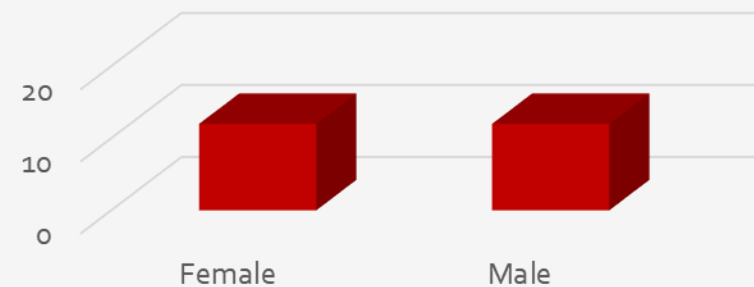


Project Sample Demographics

Clients by Gender Identity (N=24)



Clients by Transmission Mode (N=24)





Project Sample

Viral Load Measures

Optimum Outcome – HRSA Viral Suppression

Measure 1 Viral Load < 20 (N=24)		
	n	%
Baseline VL	4	26
VL # 2	8	33

Standard Outcome – RW Viral Suppression

Measure 2: Viral Load < 200 (N=24)		
	n	%
Baseline VL	14	58
VL # 2	15	63

MAI CQI Project Acuity

Definition. The levels of patient acuity equate to the number of hours/visits needed for MCM and OAH staff to care for the Ryan White MAI client's medical, physical, mental health and environmental needs, therefore acuity assessment is a MAI function.

Care 4 U used the Ryan White P.E. Tool to assess Acuity Levels

Acuity Levels Score by PE			
Acuity 0	Acuity 1	Acuity 2	Acuity 3
None	6	18	0

Visits			
Total Visits	Average #	Low Range	Range
166	6.91	1	16

P.E. Tool Implications for Case Management Practice

1

Assessing acuity should be done when client is enrolled

2

Acuity can be used to guide the frequency of contact required to maintain viral suppression

3

Training and understanding the P.E. Acuity Tool

4

Overriding the acuity

Under Review

Acuity Intervention Frequency of Visits

Currently, we are working with BSR to identify the optimal number of visits (i.e., FFE & TEL) required to assess patients across acuity levels

	Medical Case Management		Outpatient Ambulatory Health	
	FFE	TEL	FFE	TEL
Acuity 0				
Acuity 1				
Acuity 2				
Acuity 3				

Partnership for Health (PfH)

Partnership for Health for Medication Adherence (PfH-MA) is a brief, four-part medication adherence strategy for primary care providers to use with HIV-positive patients. Adoption of this strategy as a standard of care helps providers establish a partnership with patients and increases their knowledge, self-efficacy, and behaviors associated with adherence to antiretroviral treatment (ART).

www.effectiveintervention.org

