

# HIV Among Women in Miami-Dade County, 2021

## HIV Among Women

**6,560 (24%)**

of **27,782** persons living with an **HIV** diagnosis in Miami-Dade in 2021 were **Women**

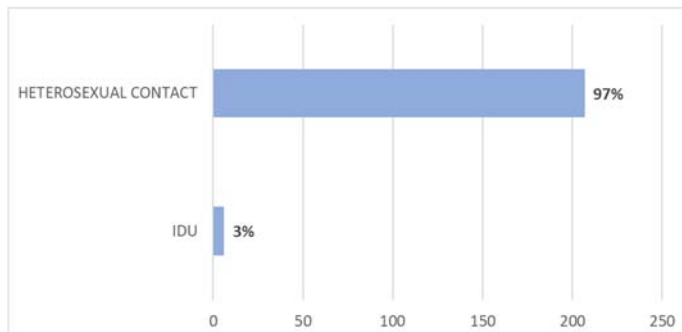
**173 (14%)**

of **1,204** persons diagnosed with **HIV** in Miami-Dade in 2021 were **Women**

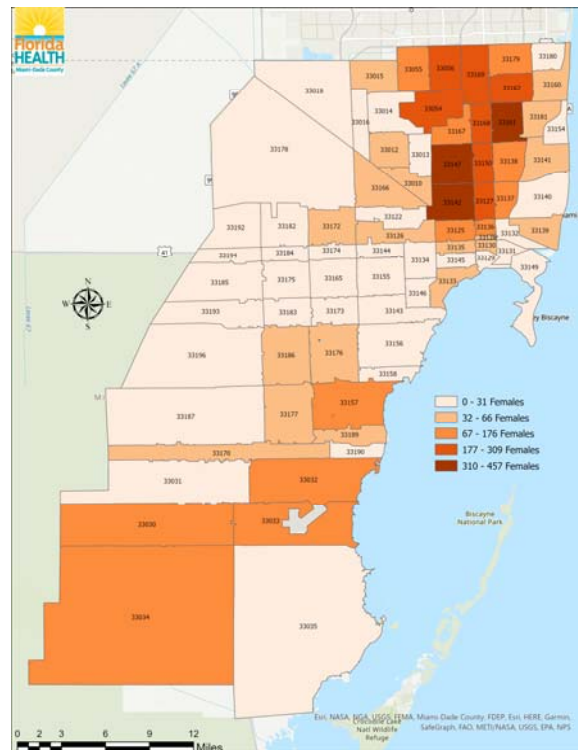
**96 (25%)**

of **388** persons diagnosed with **AIDS** in Miami-Dade in 2021 were **Women**

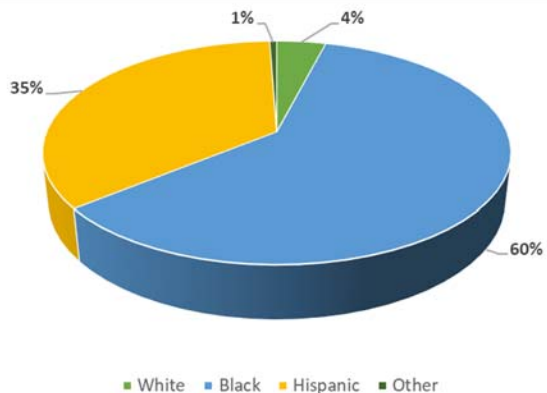
## Women who received an HIV diagnosis in 2021 by risk category



## Number of females living with an HIV diagnosis in Miami-Dade County in 2021 (n=6,560)

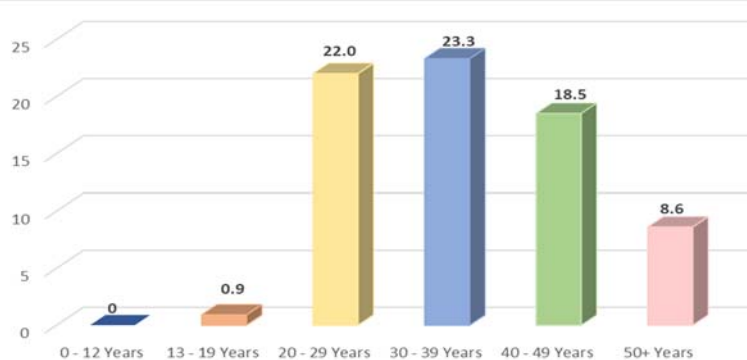


## Among women diagnosed with HIV in 2021, Blacks accounted for 60% of cases

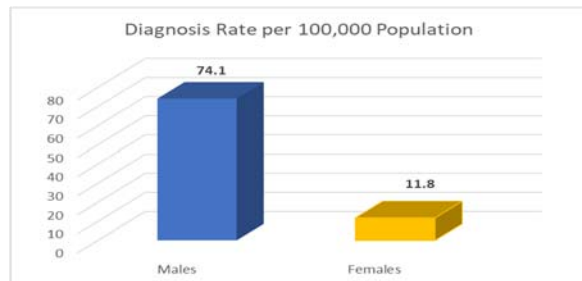


“Other” includes Asian/Pacific Islanders, American Indians/Native Alaskans, and mixed races.

## Among females with a new HIV diagnosis in Miami-Dade during 2021, the diagnosis rate was highest among 20–39 year-olds.

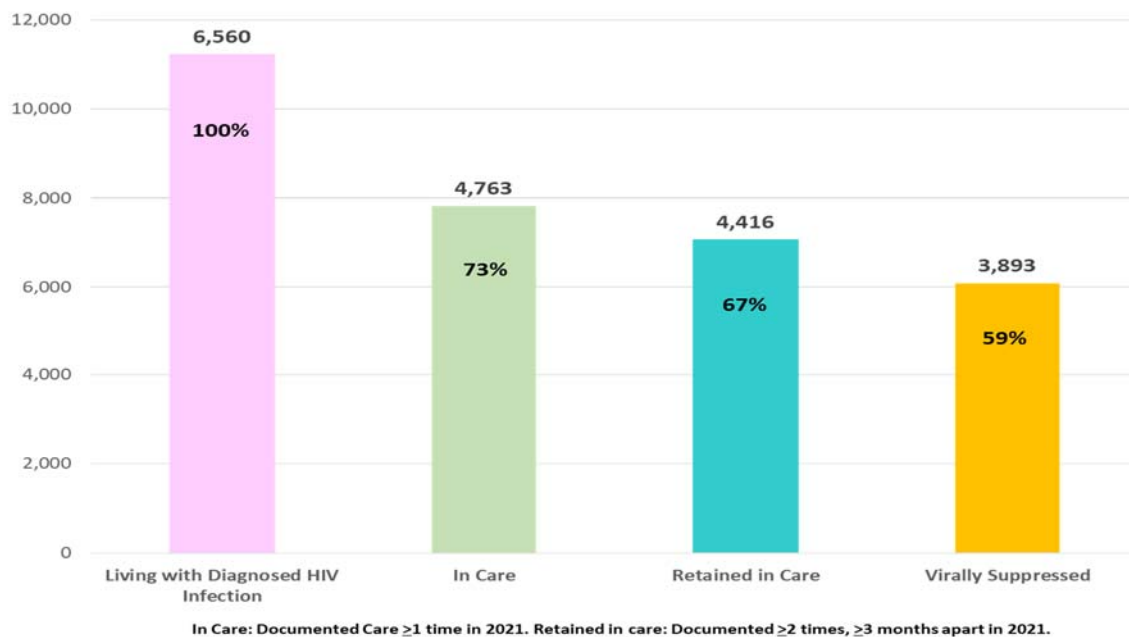


## In 2021, males were six times more likely to receive a new HIV diagnosis compared to females



## HIV Care Continuum for Women living with an HIV diagnosis in Miami-Dade in 2021

The HIV Care Continuum reflects the series of steps a person living with HIV (PLWH) from initial diagnosis to being retained in care and achieving a very low level of viral load in the blood (viral suppression). The risk of HIV transmission is greatly reduced when people have an undetectable viral load.



27%  
Of HIV+ adult  
WOMEN were  
not in care  
during 2021

### HIV Screening

All adolescents and adults (ages 13-64) should be tested for HIV at least once during their lifetime. Persons at risk for HIV should be tested **annually**.

Per Florida Law, all pregnant women are to be tested for HIV and other STDs at initial prenatal care visit, and again at 28-32 weeks and at labor and delivery, if status is unknown.

[www.knowyourhivstatus.com](http://www.knowyourhivstatus.com)

### Pre-Exposure Prophylaxis [PrEP]

For persons at increased risk for HIV, a pill (Truvada®) once daily, can reduce the risk of acquiring HIV by over **90%**. Condoms are still recommended during sex to prevent other STDs, which can increase the risk of HIV. STDs are on the rise in Florida.

[www.prelocator.org](http://www.prelocator.org)

### Antiretroviral Therapy [ART]

For persons newly diagnosed with HIV, starting ART with a provider immediately after diagnosis improves health outcomes by preventing disease progression and reducing viral load. To find a care provider or to learn more about resources available to persons living with HIV in Miami-Dade visit:

[www.testmiami.org](http://www.testmiami.org)

### Florida HIV/AIDS Hotline

1-800-FLA-AIDS (352-2437) English  
 1-800-545-SIDA (545-7432) Spanish  
 1-800-AIDS-101 (243-7101) Haitian Creole  
 1-800-503-7118 Hearing/Speech Impaired  
 To find a care provider or to learn more about the resources available to persons living with HIV in Florida visit: [www.floridaaids.org](http://www.floridaaids.org)

Data source: Florida Department of Health. Bureau of Communicable Diseases. HIV/AIDS Section. Epidemiological Profile for Area 11, Miami-Dade County. Data as of June 2022.

