

# Florida Department of Health

Miami-Dade County HIV/AIDS Partnership  
Prevention Committee

June 29, 2023

Kamelah Jones, MPH

The logo for the Florida Department of Health is a circular graphic on the left side of the slide. It depicts a sunset over the ocean, with the sun low on the horizon, casting a golden glow across the sky and reflecting on the water. The sky is filled with soft, white and orange clouds. The text 'Florida HEALTH' is overlaid on the bottom half of the circle in a white, bold, sans-serif font. The word 'Florida' is on the top line and 'HEALTH' is on the bottom line, both in all caps. The 'H' in 'HEALTH' is particularly large and prominent.

Florida  
HEALTH

# Overview

- STD Trends Comparison
- Congenital Syphilis Response
- HIV Response
- Syndemics and Social Determinants of Health

# STD Trends Miami-Dade County

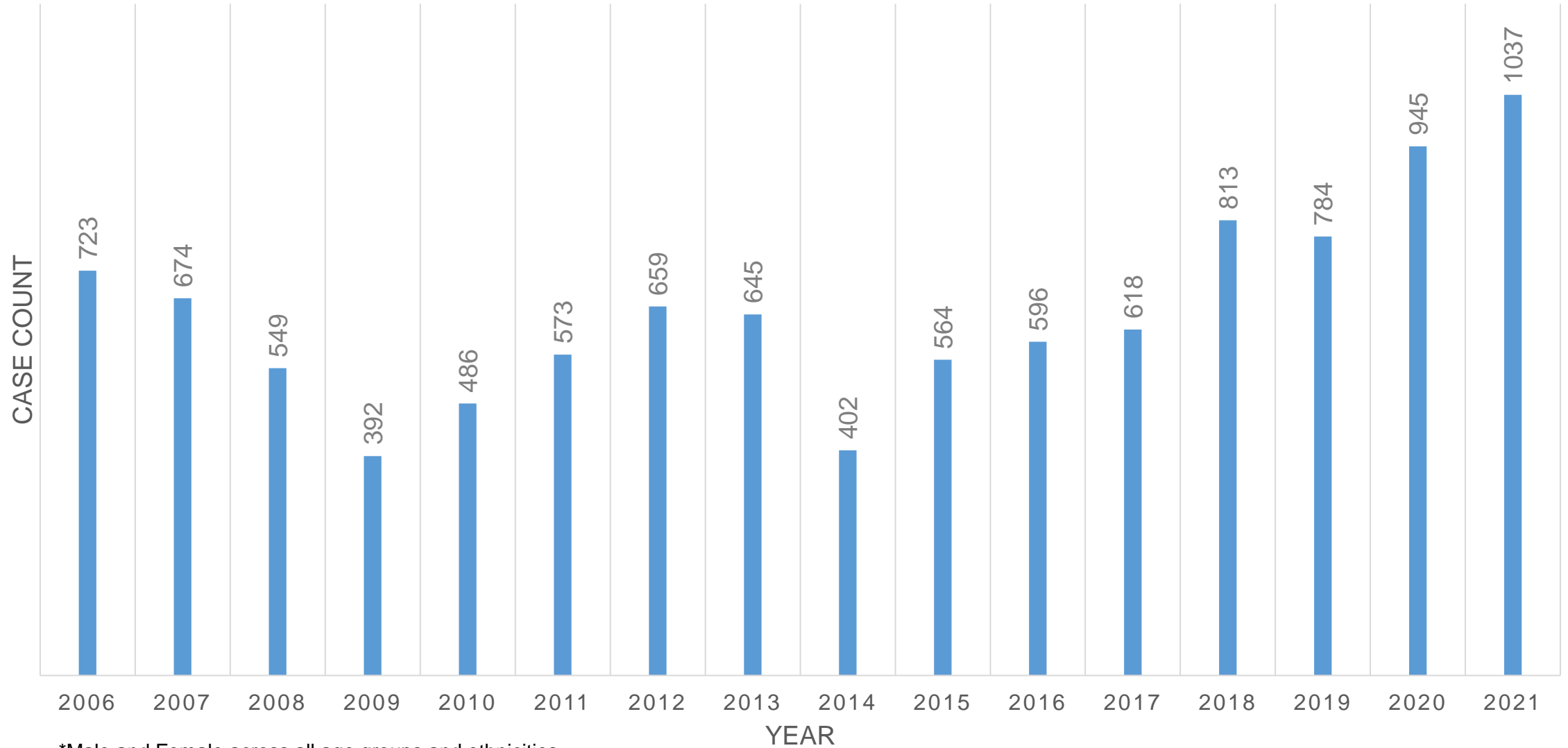
- Early syphilis diagnosis rate amongst women aged 15-44 decreased from 2019 to 2020.
- Chlamydia cases among women (15-44) superseded Gonorrhea cases between 2017 and 2021.
- Age at HIV diagnosis amongst all ages and ethnicities continues to fall within individuals aged 25 to 35 years old

Cases of STI reported to Florida Department of Health; Miami-Dade, 2020 vs 2021\*

STI	2020	2021	% Change
Infectious Syphilis	628	715	↑ 14%
Gonorrhea	945	1,037	↑ 10%
Chlamydia	12,426	14,117	↑ 14%

\*Data source: FLHealthCHARTS, Florida Department of Health, Bureau of Communicable Diseases

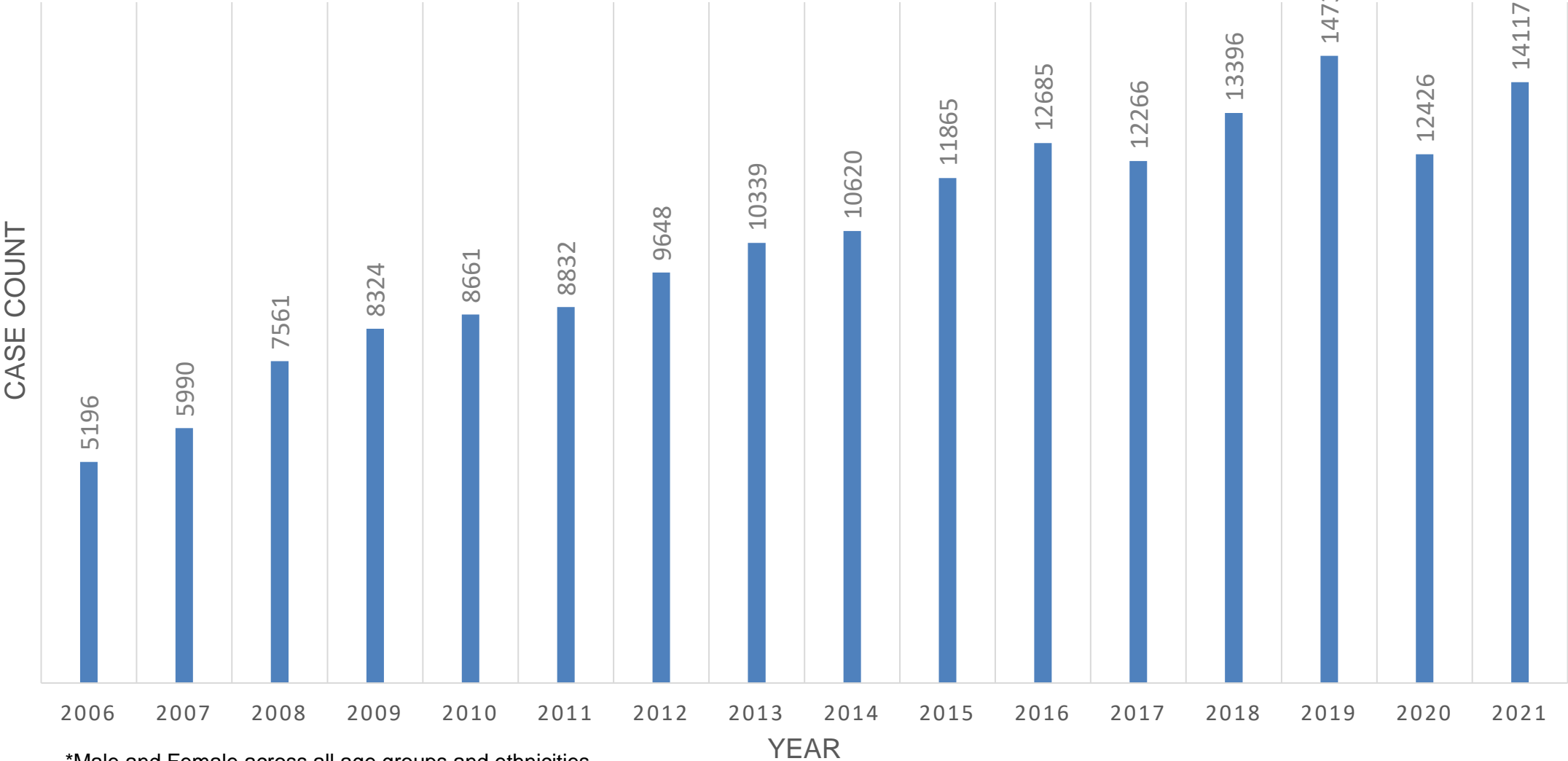
# Gonorrhea Cases\*; Miami-Dade County, Florida 2006-2021



\*Male and Female across all age groups and ethnicities

Data source: FLHealthCHARTS, Florida Department of Health, Bureau of Communicable Diseases

# Chlamydia Cases\*; Miami-Dade County, Florida 2006-2021



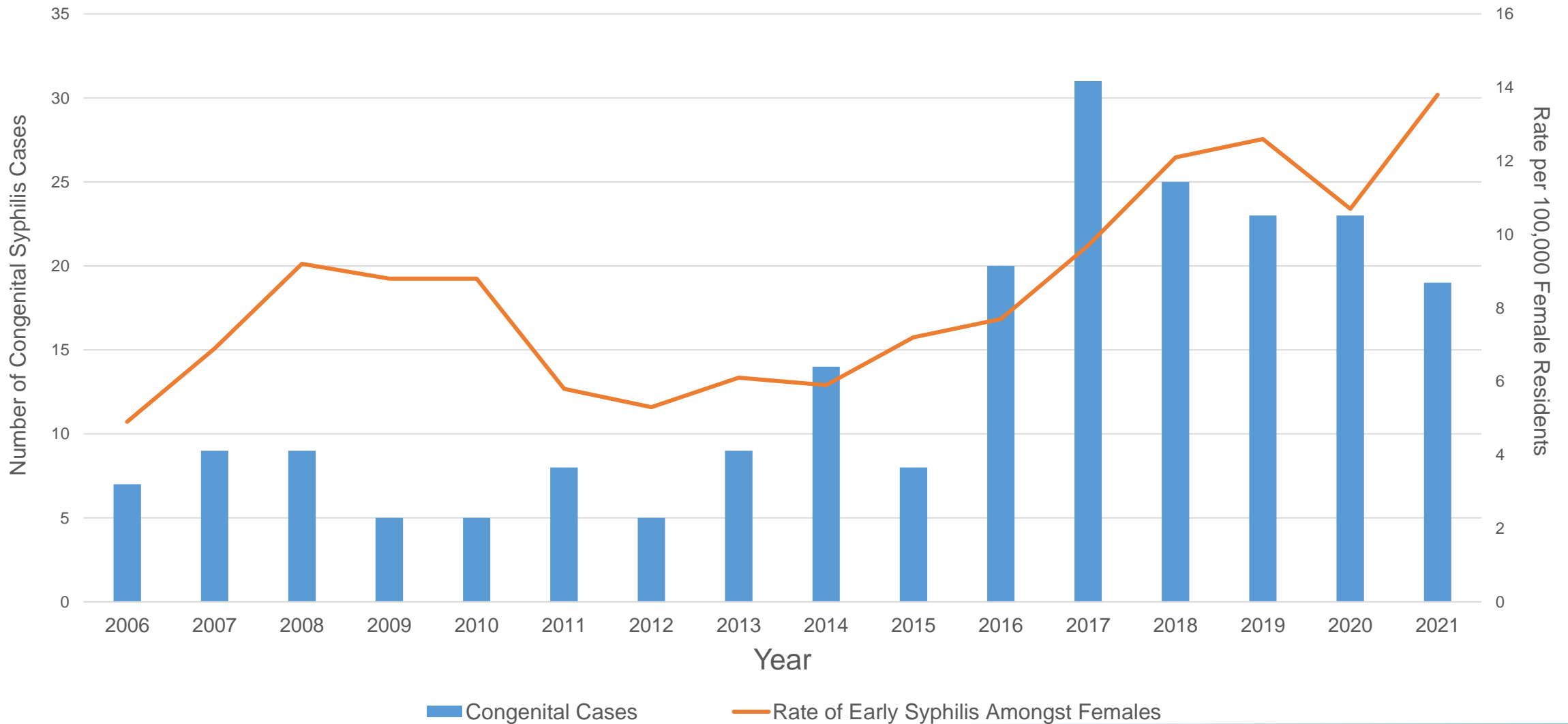
\*Male and Female across all age groups and ethnicities  
Data source: FLHealthCHARTS, Florida Department of Health, Bureau of Communicable Diseases

# Congenital Syphilis Response

The logo for Florida Health is a semi-circle on the left side of the slide. It contains a photograph of a sunset over the ocean. The sky is filled with orange and yellow clouds, and the sun is low on the horizon, creating a bright glow. The water in the foreground is dark with some whitecaps.

**Florida  
HEALTH**

# Reported Congenital Syphilis Cases and All Females Diagnosed With Syphilis (Early) Rate (Per 100,000), Miami-Dade County, Florida 2006-2021



# Enhanced ER Screening Tool

- ER screenings were originally programmed to screen HCV and HIV. We can now screen for syphilis to circumvent infants born with CS.
- Algorithm was first enhanced by Baptist Homestead Hospital\* [2018-2019]
- Automatic opt out tool fully implemented within Jackson Main ER to screen males and females <60 y.o. [2020-present]
- We also partnered with IDEA Exchange



\*Venegas, A. L., Melbourne, H. M., Castillo, I. A., Spell, K., Duquette, W., Villamizar, K., ... & Rojas, L. M. (2020). *Enhancing the routine screening infrastructure to address a syphilis epidemic in Miami-Dade County County*. *Sexually Transmitted Diseases*, 47(5S), S61-S65.



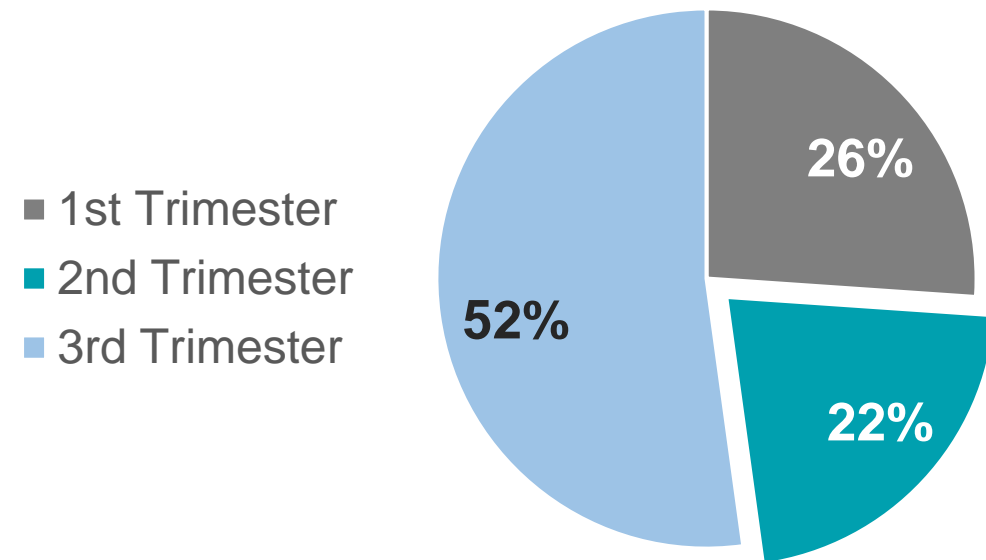
**Table 1: Demographic and Clinical Characteristics of Syphilis Infected Females Screened in Jackson Health ER-Miami Dade County, FL February 2021 – June 2022**

Variable Demographics	Patients (N=43)
<b>Age – no. %</b>	
15-19 yr	5 (12%)
20-24 yr	5 (12%)
25-29 yr	5 (12%)
30-34 yr	11 (26%)
35-39 yr	10 (23%)
40-44 yr	9 (21%)
<b>Race ---no. %</b>	
Black	28 (65%)
White	14 (33%)
Other or missing data	1 (2%)
<b>Ethnicity – no. %</b>	
Hispanic/Latino	15 (35%)
Non-Hispanic	28 (65%)
<b>Pregnancy Status-- no. %</b>	
Pregnant	23 (53%)
<b>Syphilis Clinical Characteristics</b>	
Infectious (primary or secondary)	7 (16%)
Early Latent	16 (37%)
Late Latent	20 (47%)

\*Data captured for women aged 15-44 with no prior syphilis diagnosis. Not representative of final analysis.

## Pregnant Females Treated For Newly Diagnosed Syphilis, By Trimester, JMH Main ER, Miami-Dade County, Florida, Feb2021- Jun2022

Data Source: Florida’s sexually transmitted disease reporting system - STARS (Surveillance Tools and Reporting System)



# CS Intervention Team



## CS DIS and Surveillance Managers

Case Reviews: The team conducts quarterly reviews of CS cases pulled from the surveillance system.

- To identify barriers and challenges to CS disease interventions

- To propose new improvements to adapt to the changing landscape

### Barriers:

- Hospital compliance and cooperation with FL Statute syphilis testing guidelines

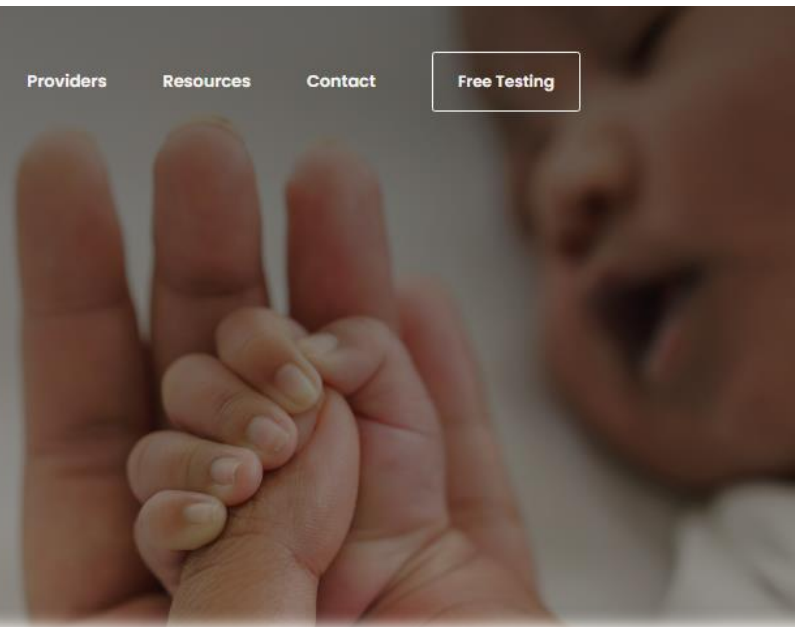
- Pregnant cases medical history

# Protect your baby from syphilis

**Get Tested. Get Treated.**

40% of babies born to women with untreated syphilis could die from the infection.

[Find Free Testing](#)



[www.stopsyphilisfl.com](http://www.stopsyphilisfl.com)

## Connect to Care

### IT'S IMPORTANT TO GET SCREENED

Not all mothers with syphilis have symptoms, so it's important to get tested early and throughout pregnancy. Health care providers are required to test for syphilis during the 1st and 3rd trimesters in Florida.

Syphilis is curable, but left untreated it can be fatal for your baby.

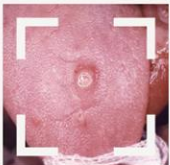
[Get Connected to Care](#)

## Signs and Symptoms

### NOTICE ANY OF THESE SIGNS OR SYMPTOMS?

Not everyone with syphilis has symptoms, so it's important to get tested. If you have symptoms, getting checked and treated quickly is important for both you and any sexual partners in order to prevent infection for your baby.

[Get Tested](#)



### TALK TO YOUR DOCTOR

Go to all of your prenatal checkups, even if you're feeling fine!



### GET TESTED

Test in your 1st and 3rd trimester, get tested at your prenatal visits.



### RECEIVE TREATMENT

Get treated right away if diagnosed with syphilis!

# **HIV Rapid Transmission Response**

The logo for Florida Health is a semi-circle on the left side of the page. It contains a photograph of a sunset over the ocean. The sky is filled with orange and yellow clouds, and the sun is low on the horizon, creating a bright glow. The water in the foreground is dark with some whitecaps. The text 'Florida HEALTH' is overlaid on the bottom left of the semi-circle.

**Florida  
HEALTH**

# Investigate

Attention is focused on people **experiencing rapid HIV** transmission.

This signifies **gaps in HIV prevention and/or treatment services.**

This means **resources are not efficiently reaching members of our community who are high risk.**

Response is crucial to identify and close those gaps to better serve the needs of the community experiencing rapid HIV transmission.

Oster et al. (2021)



HIV Rapid  
Transmission  
Surveillance

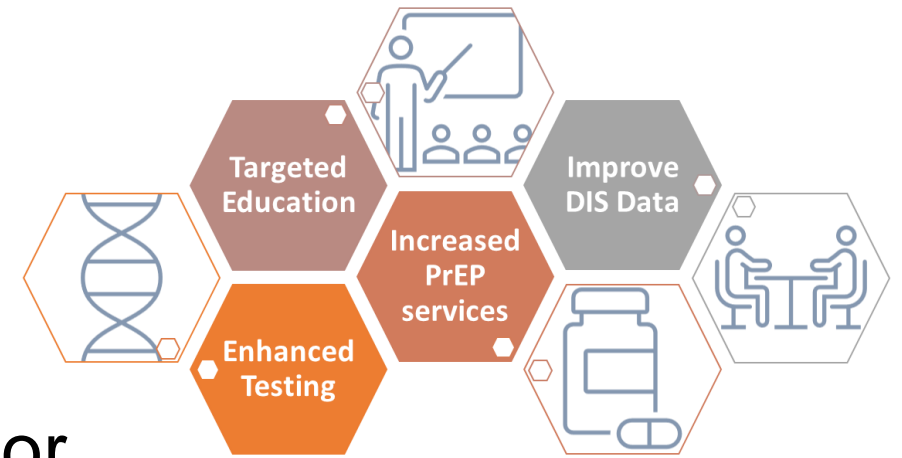
Identify gaps in  
services

Increase testing  
services and  
provider  
awareness of  
underserved  
populations

# Response Mechanisms

We are addressing those prevention and treatment gaps in services through innovative methods.

- ER Screenings
- Telemedicine
- Promoting Status Neutral Approach
- Behavioral Health and Wellness Counselor
- Improving testing, Prep referrals and navigation, education, partner services, and increasing disease intervention specialists.



# Genotypic Testing

HIV-1 genotype resistance tests are critical to ascertain the extent of rapid transmission networks

Allowable under test & treat/rapid access guidance for patient re-entry or newly diagnosed



# Overarching Goals

- Health and Wellness for all members of the community
- Reduced HIV incidence
- Maintain Continuum of Care for people
- Create innovative methods to solve the STI epidemic to reduce HIV transmission
- Health improvement to reduce Syndemic effects

# Syndemics

The logo for Florida Health is a semi-circle on the left side of the slide. It contains a photograph of a sunset over the ocean. The sky is filled with orange and yellow clouds, and the sun is low on the horizon, creating a bright glow. The water in the foreground is dark with some whitecaps. The text 'Florida HEALTH' is overlaid on the bottom left of the semi-circle.

**Florida  
HEALTH**

# Syndemics and SDOHs

Syndemic is a term for two or more epidemics, that interact biologically and socially to worsen health outcomes.

HIV, Syphilis, COVID 19, Mental Health, Opioid..

Syndemic interactions with SDOH can worsen disease epidemics and further the presence of health disparity.



# Best Practices

- Community Partnerships
- Promoting Status Neutral Approach
- Reducing Syndemic effects

# Contact Information



Kamelah Jones

STD/HIV Program

Florida Department of Health Miami-Dade County

kamelah.jones@flhealth.gov